

THE NEWTON WATERPROOFING PRODUCT CATALOGUE

The complete product guide for all structural
waterproofing project requirements

Designed. Supplied. Guaranteed.

Newton House
17-20 Sovereign Way
Tonbridge, Kent, TN9 1RH

T: +44 (0)1732 360 095
E: info@newtonwaterproofing.co.uk
tech@newtonwaterproofing.co.uk
W: www.newtonwaterproofing.co.uk



CONTENTS

WELCOME TO NEWTON	4
WATERPROOFING SYSTEMS	6
STRUCTURAL WATERPROOFING	10
Type A - HYDROBOND & HYDROSEAL	10
• Liquid Waterproofing Membranes	11
• Sheet Membranes	13
• Drainage Membranes	14
• Primers & Ancillaries	15
Type B - HYDROTANK	20
• Waterbars & Waterstops	21
• Injection Hose & Resins	21
• Service Entry Sealing Systems	22
• Mastics & Ancillaries	25
Type C - CDM SYSTEM	26
• Cavity Drain Membranes	27
• Insulation & Drainage	28
• Plugs, Tapes & Ancillaries	29
• CDM Sump & Pump Systems	31
• Pump Control & Alarm Systems	32
• Battery Backup & Power Inverters	33
• Telemetry & Backup Ancillaries	34
PUMPS & PUMPING SYSTEMS	36
Individual Pump Units	36
Surface & Foul Water Pump Systems	38
Ground & Surface Water Pump Systems	39
Foul Water Pump Systems	39
GAS MEMBRANES	40
Below Ground Gas Membranes	40
Liquid-Applied Gas Barriers	41
Ground Gas Protection	41
DAMP PROOFING	42
Damp Proof Membranes - NEWTONITE	42
• Above Ground Damp Proofing Membranes	43
• Damp Proofing Ancillaries	43
Damp Proof Products - DAMPSAFE	46
• Flooring & Tiling Membranes	46
• DPCs, DPMs & Wall Coatings	47
COATINGS	48
Hard Wearing Coatings - NEWCOAT	48
STRUCTURAL REPAIRS	49
Injection Resins & Repair - LEAKINJECT	49
PRODUCT PARTNERS	52
GUARANTEES & WARRANTIES	54
SPECIALIST DESIGN & INSTALLATION	56
INDEX	58

WELCOME TO NEWTON WATERPROOFING SYSTEMS

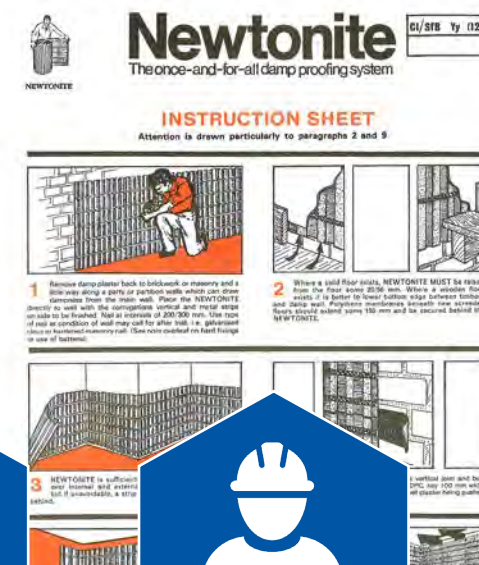
Newton Waterproofing Systems are the oldest and the largest independent designers and suppliers of guaranteed waterproofing systems in the UK, providing complete waterproofing systems for any below-ground structure. From design services to installation advice, we can assist throughout your project.

Use this catalogue to browse our extensive range of products for waterproofing, damp proofing, gas proofing and structural protection and repair - please also feel free to contact us for further product advice.

PROTECTING BUILDINGS SINCE 1848

Newton Waterproofing Systems have been a family run business since 1848.

We were the first to pioneer 'air gap' technology in the 1931 and developed the first cavity drain membrane system in 1986. We have a proven history of supplying high quality waterproofing and damp proofing materials along with expert technical advice and support.



NEXT-DAY DELIVERIES ON NEWTON VANS

Our FORS accredited delivery fleet provides tracked next-day deliveries into London, the Home Counties and South East, getting products to site and saving you time and money.



ON-SITE QUALITY ASSURANCE

Get training, supervision and quality assurance site visits from our team of experienced, qualified waterproofing installers, all documented via our bespoke QA app.



GUARANTEES & WARRANTIES

Cover for clients, specifiers and contractors with two unique, insurance-backed policies, in the form of an Insurance Backed Guarantee (IBG) and Latent Defects Insurance (LDI).



EXCLUSIVE PRODUCT PARTNERSHIPS

Leading global waterproofing product manufacturers partner with Newton as their exclusive distribution partner in the UK, from deck/roofing systems to injection resin specialists.



SUSTAINABILITY AND RECYCLING

Access the unique, award-winning Newton Recycling Service, and the only cavity drain waterproofing system in the UK certified to responsible sourcing standard BES 6001.



PRODUCT HELP AND ADVICE

Our qualified experts provide waterproofing assistance of all kinds, from basic advice and drawings, to taking full design liability under our Professional Indemnity insurance.

PRODUCT CERTIFICATION, TESTING AND SUSTAINABILITY

Independence is our strength - we are not tied to a specific manufacturer, giving us the freedom to source and select the best products for any waterproofing requirement. This means we can ensure our products hold third-party test data and certifications.

Throughout this catalogue, products that hold BBA or BDA certification, or which qualify for the Newton Recycling Service, have been marked with these useful icons.



Product holds BBA approval



Product holds BDA certification



Product is recyclable with Newton



Plastic/metal containers are recyclable with Newton

24/7 ACCESS TO PRODUCT DOCUMENTS

The Newton Waterproofing App is free to download from the App Store for iPhones and iPads, and the Google Play Store for Android devices. Once downloaded, the app provides unlimited access to all Newton product documents without the need for an internet connection.



Scan the QR code to download the Newton Waterproofing App.



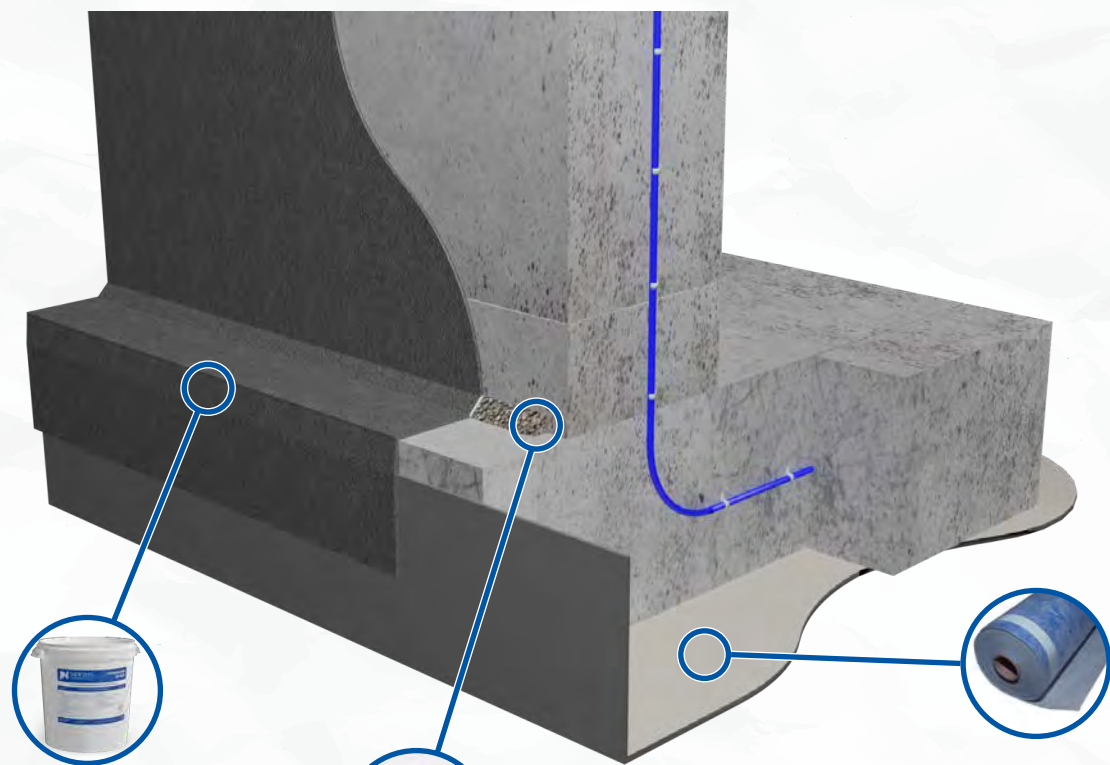
Scan me

HYDROBOND - PAGES 10-19

TYPE A - EXTERNAL WATERPROOFING SYSTEM

Defined by BS 8102:2009 as "barrier" protection that is applied to the external surface of a structure in order to resist water pressure, the Newton HydroBond System provides a complete and continuous waterproof barrier to the external surface of any below ground structure.

The system includes pre-applied, self-healing sheet membranes, and post-applied liquid membranes that link to the above ground DPC to completely encapsulate the basement in a continuous waterproof layer.



HydroBond 2K-Flex Flexible, Reinforced Bitumen Coating

Flexible, two-component and cold-applied seamless waterproofing membrane.

Page 11



HydroSeal 203-RM Rapid Set, High Strength Repair Mortar

Single-component, fast-setting mortar for the durable repair of concrete and reinforcing wall-floor junctions

Page 15

HydroBond 403 Plus Self-Healing, Pre-Applied Membrane

High performance, self healing membrane with a locking fleece on the inner surface that ensures a mechanical bond to the concrete

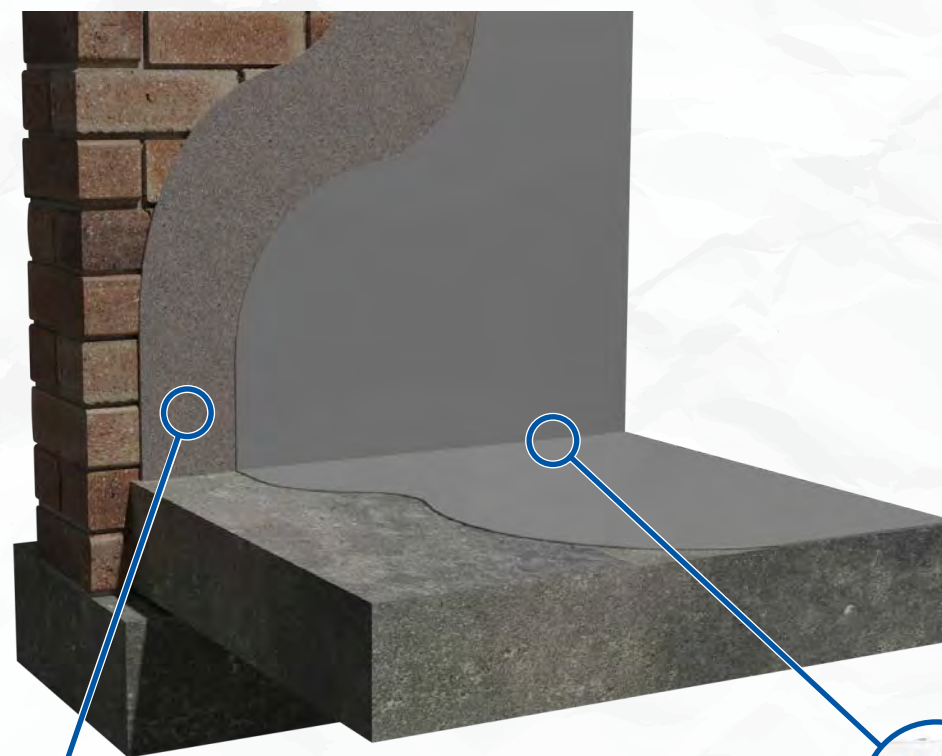
Page 13

HYDROSEAL - PAGES 10-19

TYPE A - INTERNAL WATERPROOFING SYSTEM

Defined by BS 8102:2009 as "barrier" protection that is applied to the internal surface of a structure in order to resist water pressure, the Newton HydroSeal System provides a BDA certified solution, utilising advanced products that are also quick and easy to apply.

The system includes a variety of liquid-applied membranes and slurries that can be installed by spray, trowel, brush or roller directly to the correctly prepared substrate.



HydroSeal 908-LB Acrylic Bonding Agent and Admixture

A primer for wet-to-dry cementitious systems, and as a high performance admixture in cement-based mixes.

Page 17

HydroSeal 107 Elastic 2K Cementitious Flexible Waterproofing Membrane

Cementitious coating for the waterproofing and protection of concrete and masonry. Can be spray applied, making it ideal for large projects, including reservoirs, tunnels, water tanks, basements, podium decks and balconies.

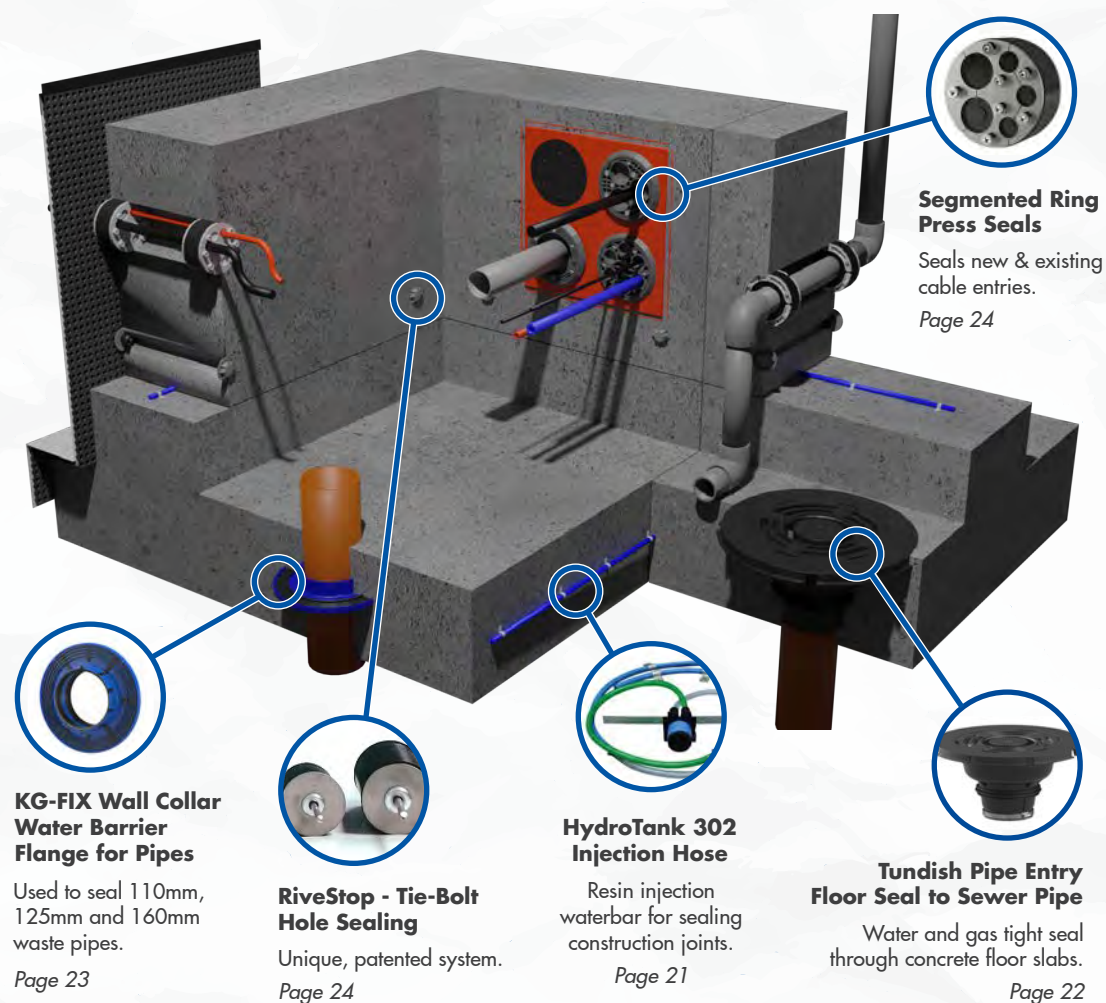
Page 11

HYDROTANK - PAGES 20 - 25

TYPE B - INTEGRAL WATERPROOFING SYSTEM

Defined by BS 8102:2009 as “structurally integral” protection where the structure itself is designed to be integrally waterproof and the primary resistance to water, the Newton HydroTank System provides options for protecting the joints and penetrations through your well-designed and well-placed concrete structure.

The system includes a range of BDA certified waterbars, waterstops, injection resins, and service entry sealing systems that are used to achieve an effective and watertight Type B solution.

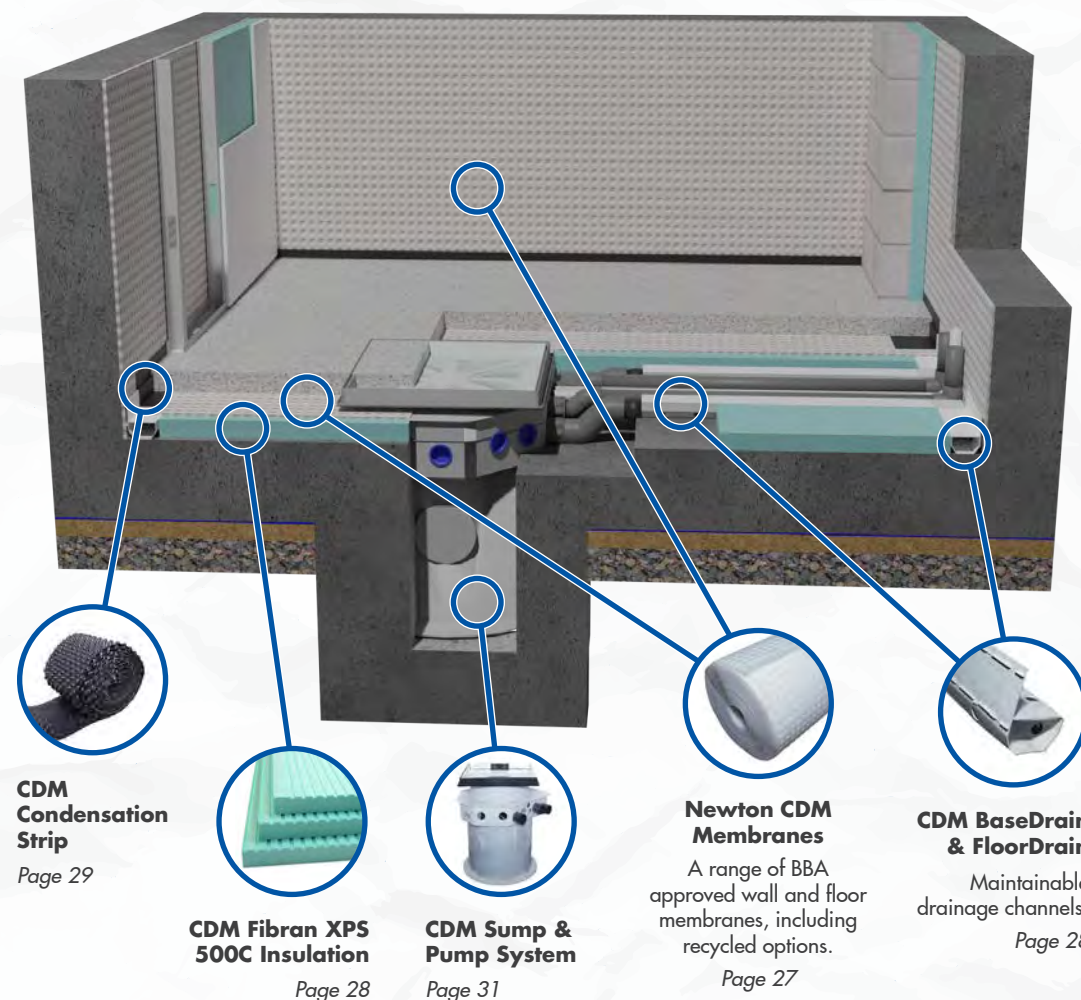


CDM SYSTEM - PAGES 26 - 35

TYPE C - CAVITY DRAIN WATERPROOFING SYSTEM

Defined by BS 8102:2009 as “drained” protection where ingressing water is accepted into the structure then safely depressurised, captured and removed, the Newton CDM System is a maintainable basement waterproofing solution that is ideal for both new-build and refurbishment projects.

The system combines our decades of experience with the highest quality, certified cavity drain membranes, supported by bespoke pumping, control, backup power and telemetry systems.



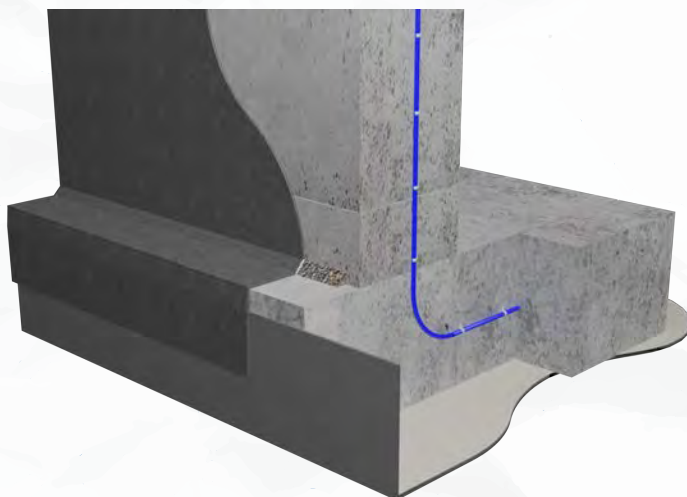
TYPE A HYDROBOND & HYDROSEAL



TYPE A WATERPROOFING

Defined by BS 8102:2009 as “barrier” protection that is applied to the internal or external surface of a structure to resist water, Type A products provide a continuous barrier to the surface of any below ground structure.

The Newton Type A range includes pre- and post-applied sheet membranes as well as post-applied liquid membranes, giving you options for delivering a continuous waterproof layer on either the outside or inside of your structure.



TYPE A - STRUCTURAL WATERPROOFING

LIQUID WATERPROOFING MEMBRANES

A comprehensive portfolio of liquid-applied membranes for all substrates and applications, ranging from flexible liquid rubber products to hard-wearing and resilient cementitious membranes. Suitable for waterproofing earth-retaining structures and both covered and uncovered decks.



HydroSeal 103 2K - Durable Cementitious Coating

- » For below-ground concrete structures, decks, balconies and car parks
- » Resists up to 10 bar water pressure
- » Quick application by airless spray
- » Durable, UV-stable and trafficable

Code	Size	Colour	Application
103-S	30kg	Grey	3.6kg/m ²



HydroSeal 104 Super - Crystalline Waterproofing

- » Applied to the concrete surface to stop moisture movement through capillaries
- » Extremely easy to apply
- » Permeates deep into the concrete
- » Cost-effective membrane alternative

Code	Size	Colour	Application
104	25kg	Grey	1kg/m ²



HydroSeal 105 1K - Cement-Based Waterproof Mortar

- » Five uses - mortar, bag-rubbing mix, surface repair, screed and render
- » Resists positive and negative pressure
- » Quick drying - rain tight in 1 hour
- » Ideal for use in confined spaces

Code	Size	Colour	Application
105	25kg	Grey	3.7 - 11 kg/m ²



HydroSeal 107 Elastic 2K - Cementitious Coating

- » For the waterproofing and protection of concrete and masonry structures
- » BDA Agrément certified
- » Durable and flexible coating
- » Quick application by airless spray

Code	Size	Colour	Application
107F	30kg	Grey	3.2kg/m ²



HydroBond 2K-Flex - Flexible, Reinforced Bitumen Coating

- » External waterproofing of below-ground structures and retaining walls
- » Complete vapour barrier
- » Flexible, bridging cracks up to 2mm
- » Easily applied up to 7mm thick

Code	Size	Colour	Application
HB-2K	30L	Black	5.6L/m ²



HydroBond 108-LM - Rubber Waterproofing Membrane

- » External waterproofing of basements, covered decks and foundation walls
- » Radon-resistant and highly elastic
- » Spray applied up to 1,000m² per day

Code	Size	Colour	Application
108-LM 108-LM-1	200L 1000L	Black	1.6 - 3.2L/m ²

TYPE A - HYDROBOND & HYDROSEAL



HydroBond 109-LM - Radon Certified Rubber Membrane

- » External waterproofing of earth-retaining structures such as basements
- » Radon certified vapour barrier
- » Extremely puncture resistant & flexible

Code	Description	Size	Application
109MV	Medium viscosity	20L	1.6 - 3.2 L/m ²
109LV	Low viscosity		



Daisen WATSTOP - Epoxy Cement Waterproof Coating

- » Fibre-reinforced mortar for surface repair and smoothing
- » For waterproofing concrete and priming several liquid membranes
- » Resists up to 9.5 bar water pressure

Code	Size	Colour	Application
110	5/10kg	Black	0.3 - 2.0kg/m ²



NewSeal PU - Seamless Liquid Roofing Membrane

- » 15 to 25 year waterproofing system for protecting roofs and decks
- » Moisture-cured polyurethane system
- » New-build and refurbishment projects

Code	Size	Colour	Application
NS-PUB	Base Coat - 17.8L	Light Grey	1L/m ²
NS-PUT	Top Coat - 17.8L	Dark Grey	0.75L/m ²



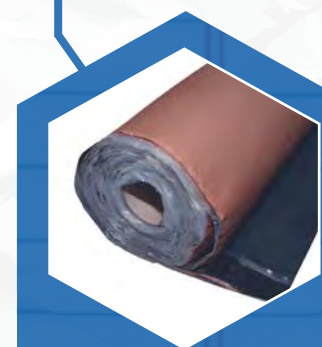
HydroBond 109-LM liquid rubber is ideal for external detailing

FEATURED PRODUCT - HYDROBOND-SA SELF ADHESIVE MEMBRANE

A high performance self-adhesive membrane for the external waterproofing of below-ground structures such as basements, water holding tanks and culverts. The membrane achieves a high-strength bond in temperatures as low as 5°C and delivers exceptional peel adhesion and crack-bridging qualities.

SHEET MEMBRANES

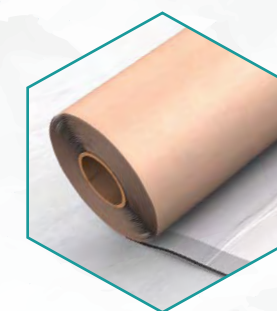
Our range of Type A sheet membranes includes options for both pre- and post-applied products, as well as a range of additional benefits such as self-healing, self-adhesive and gas barrier membranes.



HydroBond SA - Self Adhesive Waterproofing

- » Post-applied to below-ground concrete, block or ICF walls
- » Flexible and durable membrane
- » Resistant to aggressive ground water chemicals and impact

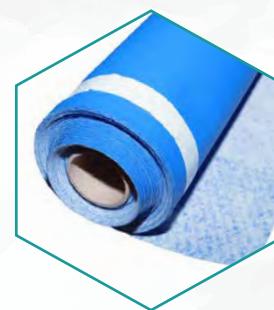
Code	Size	Colour	Area
401M	1.5mm x 1.05m x 19.05m	Black	20m ²



HydroBond SAGM - Self-Adhesive Gas Membrane

- » Post-applied to below-ground concrete, block or ICF walls
- » External waterproofing and gas proofing of below-ground structures
- » Flexible and durable membrane

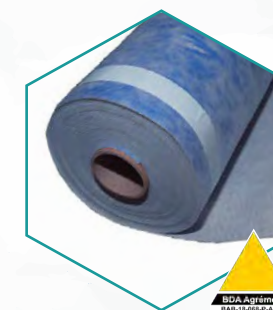
Code	Size	Colour	Area
401GM	1.5mm x 1.05m x 19.05m	White	20m ²



HydroBond 402 CCS-M - Pre-Applied Membrane

- » External waterproofing of basements, foundations, tanks and culverts
- » Effective ground-level radon DPM
- » Flexible and resistant to movement
- » Full mechanical bond to concrete

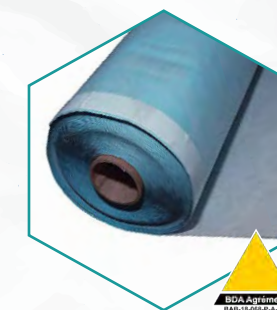
Code	Size	Colour	Area
402	1m x 20m	White/Blue	20m ²



HydroBond 403 Plus - Pre-Applied, Healing Membrane

- » Continuous external waterproofing to below-ground concrete structures
- » Self-healing when punctured
- » BDA certified & accepted by the NHBC
- » Full mechanical bond to concrete

Code	Size	Colour	Area
HB-2	1m x 20m	White/Blue	20m ²



HydroBond 403 Plus GB - Pre-Applied Water/Gas Membrane

- » Continuous external waterproofing to below-ground concrete structures
- » Resistant to radon, carbon dioxide and hydrocarbons in the ground
- » Self-healing when punctured

Code	Size	Colour	Area
HBGB	1.5m x 20m	White/Blue	30m ²

TYPE A - HYDROBOND & HYDROSEAL

DRAINAGE MEMBRANES & BARRIERS

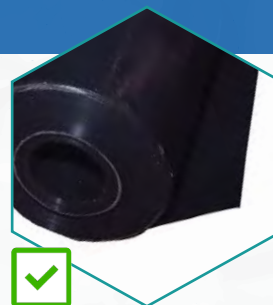
A selection of preformed external drainage membranes providing waterproofing, drainage and protection for earth-retained structures, Type A membranes, covered decks and green roofs.



NewSeal 408 DeckDrain - Deck/Roof Drainage

- » Drainage layer above a deck, balcony or flat roof waterproofing membrane
- » Ensures water cannot be trapped above the deck membrane
- » Geotextile filters out soil particles

Code	Size	Colour	Area
M33	2m x 20m	Black	40m ²



NewSeal 409 Root Barrier - Puncture Resistant Membrane

- » Protects membranes from root damage in green roof systems or planters
- » Chemically and biologically resistant
- » Lightweight and easy to install
- » Extremely durable

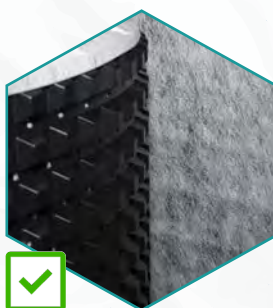
Code	Size	Colour	Area
M32	1.2m x 50m	Black	60m ²



HydroBond 410 GeoDrain - External Drainage Membrane

- » Drainage layer and protection for external waterproofing membranes
- » Protects against aggressive ground water chemicals and water pressure
- » Extremely strong and durable

Code	Size	Colour	Area
M18	2m x 12.5m	Black	25m ²



NewSeal 420 DeckDrain - Green Roof Drainage

- » Water holding/drainage above decks & roofs with extensive green roofs
- » 20mm studs create high drainage flow
- » Geotextile filters out soil particles
- » Tough, durable and easy to install

Code	Size	Colour	Area
M31	0.92m x 50m	Black	46m ²



410 GeoDrain applied externally

FEATURED PRODUCT - FLEXPROOF 106 IN CONSTRUCTION JOINTS

A highly advanced, single component, waterproofing compound with two variants for vertical and horizontal construction/movement joints. Both variants form an elastic polymer membrane that is rainproof in minutes and capable of handling severe building movements and deformations.

PRIMERS & ANCILLARIES

A full range of accessory products to accompany our Type A liquid and sheet membranes, including repair products and construction joint waterproofing, as well as products for priming detailing, reinforcing, fixing, mixing and sealing.



FlexProof 106 - Joint Waterproofing

- » Static and non-static construction joints in earth-retained structures
- » Can be used on damp substrate and in sub-zero temperatures

Code	Sizes	Colour	Application
FP2/106 FP4	290ml/15kg 7.5kg	Grey	Dependent on use



FlexProof 106 Primer - PU Primer for Construction Joints

- » Priming of substrates prior to applying FlexProof 106
- » Increases adhesion of FlexProof 106 to most substrates
- » Seals porous and dusting concrete

Code	Size	Colour	Application
916	1L	Clear	0.1 - 0.5L/m ²



NewSeal PU Primer - For Concrete, GRP and Timber

- » Primes surfaces prior to application of NewSeal PU roofing membrane (p12)
- » Single component, moisture-curing urethane primer
- » Also used as a seal coat on concrete

Code	Size	Colour	Application
NS-PUP	5kg	Light Brown	6 - 10 m ² /L



NewSeal PU Fleece - Base Coat Reinforcement Matting

- » Chopped strand reinforcement mat for use with NewSeal PU Base Coat (p12)
- » Completely encapsulated in the base coat to provide additional strength
- » Applied at 225gsm to the entire area

Code	Size	Colour
NS-PUF	1.24 x 94 m	White



HydroSeal 203-RM - High Strength Repair Mortar

- » Durable repair of concrete, ideal for bridges, decks, floors and roads
- » Single component, mix with water
- » Resists 10 bar water pressure
- » Rapid curing, even in cold weather

Code	Size	Colour	Yield
203-RM	25kg	Grey	13.3 - 23L

TYPE A - HYDROBOND & HYDROSEAL

FEATURED PRODUCT - ACRYLIC BONDING AGENT & ADMIXTURE

908 LiquaBond is a versatile product with uses including as a primer for Newton 107F (p11), as a bonding agent for internal angle fillets, between new and old concrete and between render and brick/concrete walls, and finally as an admixture to increase adhesion in sand/cement screeds and mortars.



HydroBond 2K-Flex Primer - Fast-Drying Bitumen Emulsion

- » Improves HydroBond 2K-Flex (p11) adhesion to many common substrates
- » Single component, ready to use
- » Penetrates into the substrate surface and binds dust particles

Code	Size	Colour	Application Rate
HB-2KP	10L	Black	Approx. 0.2L/m ²



HydroBond 314 Bentonite Granules - Detailing Elements

- » Detailing HydroBond pre-applied membranes (p13) at terminations to other building elements
- » Swells up to 15x its original size
- » Easily applied by hand

Code	Size	Colour	Yield - 40mm fillet
BG314	25kg	Tan	25 linear metres



HydroBond SA Primer LT - Bitumen Primer

- » Primer for HydroBond SA and HydroBond SAGM (p13)
- » Quick and easy to apply, even at low temperatures
- » Moisture tolerant and quick drying

Code	Size	Colour	Application Rate
401-P5	5L	Black	6-8m ² /litre



HydroSeal 903 Primer - For Cementitious Membranes

- » Concrete primer for our cementitious membranes (p11), concrete repair (p49) & coating products (p48)
- » Extremely quick to apply
- » Can be applied to damp/wet concrete

Code	Size	Colour	Application Rate
903-P	5L	Green	0.1 - 0.2L/m ²



HydroSeal 905-CM - Water Based Curing Membrane

- » Inhibits the effect of sun/wind on liquid waterproofing membranes (p11-12)
- » Extends curing to the required time
- » Ready mixed and ready to apply
- » Easy alternative to traditional sheets

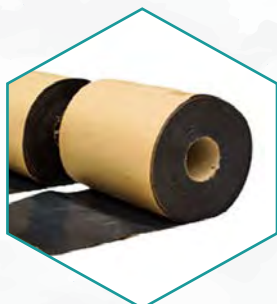
Code	Size	Colour	Application Rate
905-CM	5L	White	5 - 7m ² /litre/coat



HydroSeal 908-LB - Bonding Agent & Admix

- » High performance admixture & primer for cementitious systems
- » Versatile, resilient, and provides excellent adhesion as an admix

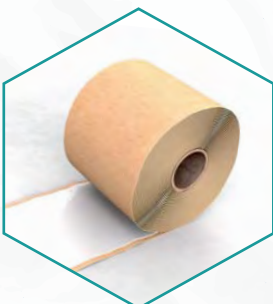
Code	Sizes	Colour	Application
LB	5L 25L	Clear	Dependent on intended use



HydroBond SA Reinforcing Strip - Strengthens Details

- » Compatible with HydroBond SA (p13) self-adhesive waterproofing
- » Reinforces the wall-to-foundation joint and provides enhanced impact and damage protection at external corners

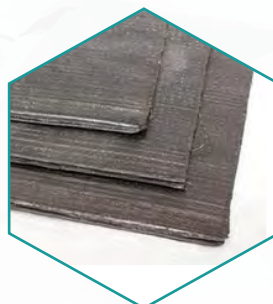
Code	Size	Colour
401-RS	300mm x 20m	Black



HydroBond SAGM Detail Strip - Strengthens Details

- » Use with HydroBond SAGM (p13) gas & waterproofing membrane
- » Reinforces the wall-to-foundation joint and provides enhanced impact and damage protection at external corners

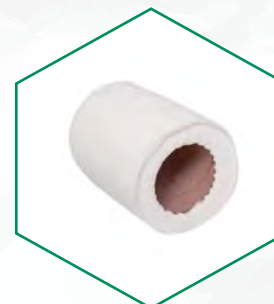
Code	Size	Colour
401-DS	300mm x 20m	White



HydroBond Protection Board - Prevent Membrane Damage

- » Protect externally applied waterproof membranes (p11-13) from damage
- » Bitumen-impregnated protection board
- » Easily cut with a knife - quick to install
- » Resistant to water and chemicals

Code	Board Size	Colour
HBPB	3mm x 1m x 2m	Black



HydroSeal 912-RT - Liquid Membrane Reinforcement

- » Compatible with liquid waterproofing membranes (p11) & coatings (p48)
- » Reinforce changes in direction, cracks, static construction/day joints and covered joints with slight movement

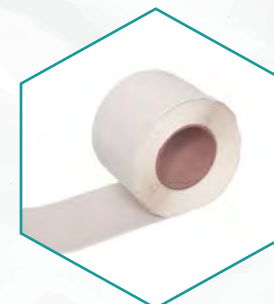
Code	Size	Colour
912-RT	150mm x 50m	White



HydroSeal 914-RT - Non-Woven Reinforcement Tape

- » Compatible with HydroBond 108-LM (p11) and HydroBond 109-LM (p12)
- » For reinforcing covered movement joints and static construction joints, and detailing around protrusions

Code	Size	Colour
914-RT	150mm x 100m	White



HydroBond Tape - Double-Sided Sealing Tape

- » Sealing tape for HydroBond 403 Plus and HydroBond 403 Plus GB (p13)
- » Provides a firm seal and bonds the two membrane surfaces together for robust laps and repairs

Code	Size	Colour
HBT	75mm x 20m	White/Dark Blue

TYPE A - HYDROBOND & HYDROSEAL



HydroBond Soft Washer Fixings - HydroBond 403 Plus

- » Used when HydroBond 403 Plus (p13) is to be pre-applied to concrete substrates such as secant piled walls
- » Easily installed with a hammer

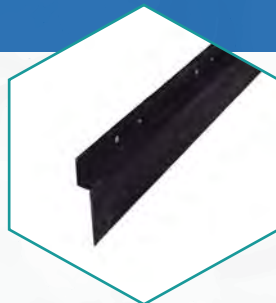
Code	Size	Quantity
4031	8 x 36mm	100



HydroBond Fixing Set - Pulsa Nails and Washers

- » Fixing nails for the Pulsa 800 series Spit Gun. Includes 50ml gas cylinder
- » Washer applied prior to firing fixings through HydroBond 403 Plus (p13)

Code	Size	Quantity
HBA2	25mm Ø Pulsa washers	1,000
HBA3	27 x 10mm nails	500



HydroBond Geo Profile - Capping Strip for GeoDrain

- » HDPP capping strip applied to the top of HydroBond 410 GeoDrain (p14)
- » Seals the drainage membrane against debris accidentally falling behind the membrane during backfilling

Code	Size	Colour
A15	2m x 64mm	Black



Dual-Paddle Hand Mixer - Collomix Xo55 DUO

- » Dual forced action mixer for liquid waterproofing membranes (p11-12)
- » Intensive, fast and thorough mixing
- » Includes MKD Duo stirrers
- » Excellent ergonomics

Code	Power	Output	Mix Quantity
Xo55	110V	1450W	Up to 90L



Single-Paddle Hand Mixers - Collomix Xo1 & Xo4

- » High performance, hand-held mixers
- » Compact and lightweight 1-gear (Xo1) and 2-gear (Xo4) devices
- » Suitable for a variety of mixing tasks

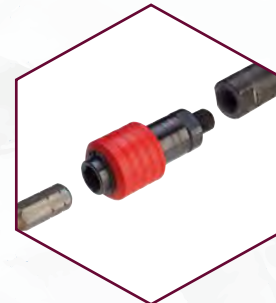
Code	Power	Output	Mix Quantity
Xo1	110V	1010W	Up to 40L
Xo4		1300W	Up to 65L



Mixing Paddles - For Mixing Liquids and Powders

- » For liquid membranes (p11-12), HydroSeal 203-RM (p15), NewCoat 701-HB (p48) & NewCoat 901-P (p48)

Code	To Mix	Ø mm
DLX120HF	103-S, 107F, 701-HB, 901-P	120/160
KR120HF	103-S, 107F	
WK120HF	104, 110 WATstop, 203-RM	



Hexafix Fast Coupling - Adaptor for Standard Mixers

- » Converts standard mixers for use with Collomix mixing paddles (p18)
- » Easy to use, quick-release coupling
- » Included with Collomix mixers (p18) or also available as a separate item

Code	Thread Size	Paddle Type
CM15	Male M14	Collomix Range



M14 to M14 Adaptor - For Collomix Paddles/Mixers

- » Converts standard equipment for use with Collomix mixers/paddles (p18)
- » M14 to M14 adaptor is compatible between different equipment types
- » Available to order as a separate item

Code	Thread Size	Paddle Type
CM14	Female M14	Collomix/Standard M14



Mixer Cleaning Bucket - Easy Cleaning for Paddles

- » Easy cleaning system for paddles
- » Fits both single and dual paddles
- » Fast cleaning by placing the paddle into the water-filled bucket and running for a short time

Code	Size	Weight	Max. Ø of Paddle
MCB	30L	4.4kg	210mm



RMX Mixing Stand - Heavy Duty Pneumatic Mixing Aid

- » Holds the Collomix hand mixers (p18) for easy, safe mixing
- » Stable stand is foldable to allow easy transport and storage

Code	Max. Size	Weight	Max. Pail Height
RMX	455 x 455 x 1180	17kg	450mm



Mixing Buckets - High Quality Polyethylene Buckets

- » Mortar/mixing buckets with high stability and carrying capacity
- » Ideal for Collomix mixers (p18)

Code	Capacity	Transport Cart
MB30	30L	N/A
MB65	65L	TC1
MB90	90L	TC2



Transport Carts - For Large Volumes of Mixed Product

- » Engineered transport system for Collomix mortar and mixing buckets
- » Pneumatic tyres and locking devices for effortless moving and pouring

Code	Diameter	Bucket
TC1	580mm	MB65
TC2	680mm	MB90

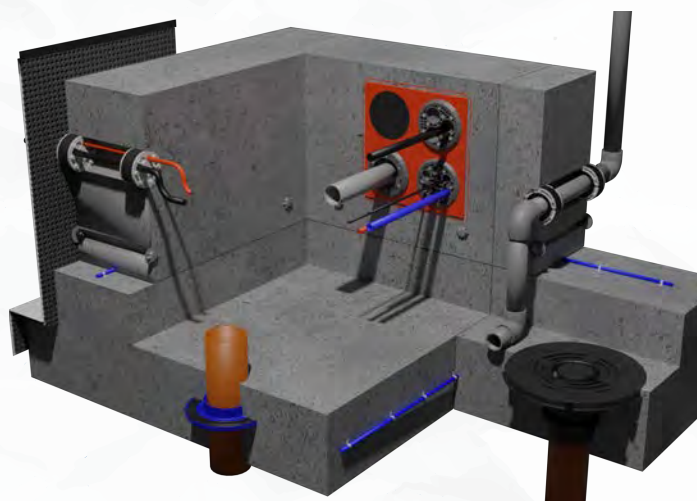
TYPE B HYDROTANK SYSTEM



TYPE B WATERPROOFING

Defined by BS 8102:2009 as "structurally integral" protection where the structure is designed to be integrally waterproof and the primary resistance to water, this range of products protect the joints and penetrations through your Type B structure.

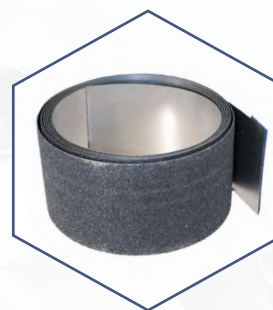
The Newton Type B range of products includes BDA certified waterbars as well as waterstops, injection resins, service entry seals, and patented tie-bolt hole seals that all achieve an effective and watertight Type B solution.



TYPE B - STRUCTURAL WATERPROOFING

WATERBARS AND WATERSTOPS

Alongside a well designed and well placed reinforced concrete structure, designed in accordance with BS EN 1992 to limit flexural and sectional cracking, the use of correctly selected, designed and installed waterbars in the joints and penetrations will help to achieve a watertight 'Type B' structure.



HydroTank 301-EP - Metal Construction Joint Waterbar

- » Waterproofing construction joints between concrete rafts and walls
- » Waterproof up to 5 bar water pressure
- » Can be installed in any weather and any temperature

Code	Size	Colour
SX301	140mm x 6m	Silver/Black



HydroTank 315 Waterbar - Polymer Swelling Waterbar

- » Seals against water in cast-in-place concrete & pre-cast construction joints
- » Swells up to 9 times its original size

Code	Size	Colour
315-2	20mm x 2mm x 20m	White
315-5	20mm x 5mm x 20m	
315-10	20mm x 10mm x 10m	



INJECTION HOSE & RESINS

We are the exclusive UK distributor for Belgian injection resin specialists Tradecc.

This not only provides access to their specialist injection hose and resin products for Type B joint waterproofing, but also to the entire range of Tradecc products and their high quality in-house technical expertise.



HydroTank 302 Injection Hose - Resin Inject Waterbar

- » Inject with resin to seal joints in earth-retaining concrete structures
- » Can be used with both polyurethane and acrylic injection resins (p21-22)
- » No concrete kicker or rebate required

Code	Size	Colour
302	120m coil	Light Blue



Leakinject 2K Flex 6811 LV - Elastic PU Resin

- » Two-component, low viscosity and elastic polyurethane injection resin
- » Use with HydroTank 302 Injection Hose
- » Developed for sealing walls, floors, and underground concrete structures

Code	Components	Total Weight
322	Two	25.2kg

TYPE B - HYDROTANK SYSTEM



509 ZL Acryl - Elastic Acrylic Resin

- » Flush through the HydroTank 302 Injection Hose (p21) and re-inject for maintainable Type B waterproofing

Code	Components	Weights
323	Resin Catalyst Initiator	25kg 2.5kg 0.06kg



HydroTank Ecoclean - Eco Friendly Cleaning Agent

- » Flushing through/cleaning PU injection resin pumps during and after pumping
- » Removes uncured polyurethanes
- » Suitable for all Newton polyurethane injection resins (p21, 49)

Code	Components	Weight
340	One	10kg



HydroTank PU Cleaner - PU Resin Solvent Cleaner

- » Cleans cured resin from injection resin pumps once pumping is complete
- » Suitable for use with all Newton injection resins (p21, 22 and 49)
- » Can be filtered and reused

Code	Components	Weight
341	One	10kg

SERVICE ENTRY SEALING SYSTEMS

It's always preferable to avoid penetrations through your below-ground structure, however it is often unavoidable.

Our comprehensive range of products provide effective seals for both new-build and retrofit service entries, as well as tie-bolt holes in concrete construction.



HydroTank 308 Stopaq - Pipe Sealant for Service Ducts

- » Sealing within/around service entries against water, gas and water vapour
- » Immediate seal - no curing time
- » Flexible to movement & new inserts

Code	Packaging	Colour
SX308	308 Stopaq = 0.53kg/0.4L Stopaq Mortar = 0.5kg/0.6L	Green



Tundish Waste Pipe Entry - Floor Seal to Sewer Pipe

- » Seals through concrete floor slabs to the underground sewer pipe
- » Three-ribbed seal is gas-tight, radon-tight and watertight
- » Simple on-site installation

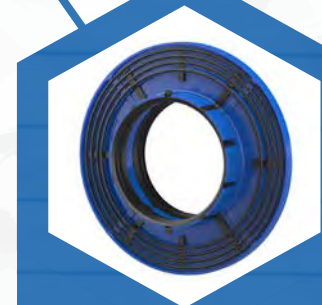
Size	Used to Seal
385mm O/D	110mm Waste Pipes



Universal Wall Entry - Water & Gas-Tight Waste Pipe Entry

- » Seals waste pipe entries through walls
- » Prevents deposits and back flow
- » Quick and easy to install - adaptable to wall thickness on site
- » Watertight and gas-tight

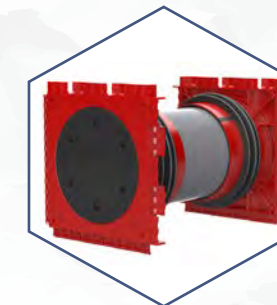
Sizes	Used to Seal
100 or 150mm I/D	Waste Pipes



KG-FIX Wall Collar - Water Barrier Flange for Pipes

- » Watertight barrier flange for waste pipes through floor slabs
- » Resists 2.5 bar water pressure
- » Radon tight
- » Fits 110, 125 and 160mm pipes

Used to Seal	Location
110, 125 & 160mm pipes	External seal



90mm Cable Entry Insert - Pressure Tight Wall Seal

- » Installation in concrete walls with cable connections on both sides
- » Minimum wall thickness 100mm
- » Watertight and gas-tight to 2.5 bar
- » Pressure-tight closing covers both sides

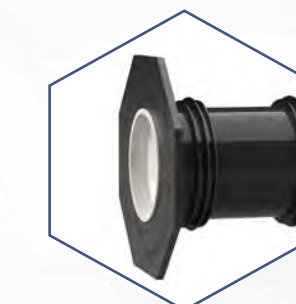
Diameter	Used to Seal
90mm I/D	Service Entries



150mm Cable Entry Insert - Pressure Tight Wall Seal

- » Installation in concrete walls with cable connections on both sides
- » Minimum wall thickness 100mm
- » Watertight and gas-tight to 2.5 bar
- » Pressure-tight closing covers both sides

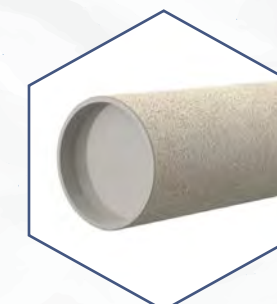
Diameter	Used to Seal
150mm I/D	Service Entries



Universal Wall Sleeve - Seals Through all Wall Types

- » Seals through any wall construction due to patch flange and three-rib seal
- » Lightweight and simple to install
- » Cut to the correct length on site
- » Gas-tight and watertight

Sizes	Used to Seal
100 or 150mm I/D	Service Entries

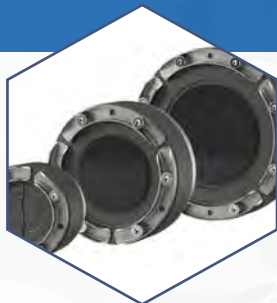


Cement-Coated Wall Sleeve - For Seamless Concrete Seals

- » Cement coating seamlessly merges with all types of concrete walls
- » Lightweight - simple install in formwork
- » Cut-to-size by Newton on request
- » Gas tight and watertight

Sizes	Used to Seal
80 or 100mm I/D	Service Entries

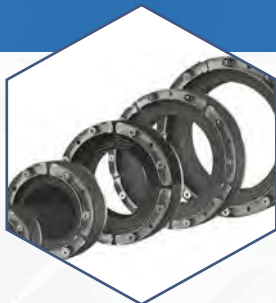
TYPE B - HYDROTANK SYSTEM



Graduated Press Seal - Fits Most Common Diameters

- » Seals new or existing pipe entries in core drills or wall sleeves
- » Adaptable on site to most common cable diameters
- » Gas-tight and watertight

Sizes	Location
100, 150 or 200mm I/D	Internal seal



Infinite Segments Press Seal - Adjusts to Any Diameter

- » Seals new or existing pipe entries in core drills or wall sleeves
- » Infinitely adjustable to any diameter
- » Gas-tight and watertight

Sizes	Location
100, 150, 200, 250 or 300mm I/D	Internal seal



Segmented Ring Press Seal - Individually Adjustable Seals

- » Split design seal, each individually adjustable to new or existing cables
- » Also ideal for retrofitting within existing pipes and service seals
- » Gas-tight and watertight

Sizes	Location
80, 100 or 104mm I/D	Internal seal



RivePipe - Reusable Tie Bar Protection for Concrete Walls

- » Protects tie bars within the concrete
- » Removable, reusable and recyclable
- » Leaves a clean, uniform tie-bolt hole

Code	Length	Tie Bar Ø	Units
RS-J80000	100mm Male	19mm	100
RS-J80001	200mm Female		
RS-J80003	150mm Female		



RiveOut - Easily Removes RivePipes from Concrete

- » Screws into both sides of the RivePipe to safely extract it from the concrete
- » Extremely quick and easy to use
- » Leaves a clean, uniform and plastic-free tie-bolt hole

Code	Length	Weight	Application Range
J70001	415mm	2.62kg	Ø19.5mm - Ø35mm



RiveStop - Concrete Tie-Bolt Hole Sealing

- » Patented rivet system for easily sealing tie-bolt holes
- » Expands up to 50% of original size to hermetically seal the tie-bolt hole
- » 90% faster than traditional methods

Code	Quantity	Application
RS-J41236	225	24 - 27mm tie-bolt holes

FEATURED PRODUCT - HYDROTANK 306 HYDROPHILIC MASTIC

A multi-purpose adhesive and sealant that is fast-curing, swellable and single-component. When exposed to water it swells up to 200% of its original size, whilst maintaining high levels of elasticity and tensile strength, making it ideal for fixing, sealing and detailing around our Type B products.

MASTICS & ANCILLARIES

With options for both swelling and non-swelling adhesive mastics, we have exactly what you need to reliably install our Type B waterbars (p21), as well as sealing and detailing around our Type A membranes (p13).



HydroTank 306 Swell Mastic - Swelling Adhesive

- » Swells in contact with water to 200% of its original size
- » For installing Newton waterbars (p21), detailing HydroBond 403 Plus (p13) and sealing protrusions

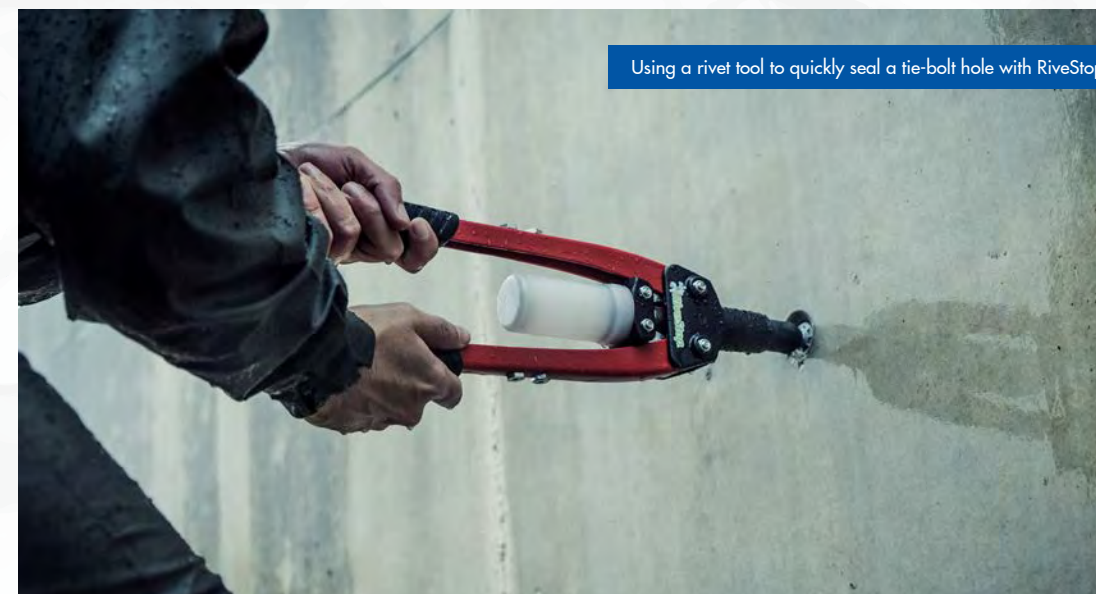
Code	Size	Colour	Application Rate
SX306	310ml	White	5.5 - 8.5 linear metres



HydroTank 309 Flexible Adhesive - Durable Mastic

- » Flexible, non-swelling option for waterbars (p21), CDM BaseBoard (p28) as well as general panels, frames and other similar elements
- » Bonds to most building materials

Code	Size	Colour
309-M	290ML	White



Using a rivet tool to quickly seal a tie-bolt hole with RiveStop

TYPE C CDM SYSTEM



TYPE C WATERPROOFING

Defined by BS 8102:2009 as "drained" protection Newton's Type C waterproofing system combines our decades of experience with top quality, BBA certified cavity drain membranes, supported by bespoke pumping, control, backup power and telemetry systems.

Our cavity drain system is also the only solution of its kind in the UK to achieve certification to the BES 6001 sustainability standard for the responsible sourcing of construction products.



BES 6001

Responsible Sourcing

www.greenbooklive.com

TYPE C - STRUCTURAL WATERPROOFING

CAVITY DRAIN MEMBRANES

Our range of BBA certified membranes are manufactured to the highest standard and are the flagship component of the Newton CDM System (p9). The membranes are available in 3mm, 8mm and 20mm variants, as well as meshed and non-meshed options and more sustainable recycled membranes.



CDM 503 - 3mm Cavity Drain Membrane

- » 3mm studs for when space is limited
- » Install below-ground internally as the floor/wall membrane in basements, cellars, vaults and tunnels
- » High quality, BBA certified membrane

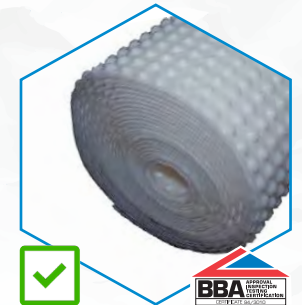
Code	Size	Colour	Area
M5	2 x 20m	White/Clear	40m ²



CDM 503 Mesh - 3mm Meshed Drainage Membrane

- » Meshed surface provides a key for lime mortars, renders, plasters or dabbled plasterboard
- » High quality, BBA certified membrane
- » 3.5mm deep for when space is limited

Code	Size	Colour	Area
M11	2 x 20m	White/Clear	40m ²



CDM 508 - 8mm Cavity Drain Membrane

- » 8mm wall/floor cavity drain membrane
- » High quality, BBA certified membrane
- » Also has 700g/m² radon-proof options

Code	Size	Colour	Area
M1	2.4 x 20m	White	48m ²
M1R	2.4 x 20m	White	48m ²
M2R	2.07 x 20m	White	40m ²



CDM 508 Eco Floor - Recycled 8mm Drainage Membrane

- » The only 100% recycled 8mm cavity drain membrane with BBA certification
- » More studs per m² results in a higher compressive resistance with less loading to the substrate

Code	Size	Colour	Area
M2	2.5 x 20m	Black	50m ²



CDM 508 Mesh - 8mm Meshed Drainage Membrane

- » Meshed surface provides a key for lime mortars, renders, plasters or dabbled plasterboard
- » High quality, BBA certified membrane
- » 8mm overall depth

Code	Size	Colour	Area
M3	2 x 20m	White/Clear	40m ²



CDM 520 Eco Floor - Recycled 20mm Floor Membrane

- » 20mm floor membrane with high drainage capacity where severe water penetration is expected
- » 100% recycled and BBA certified

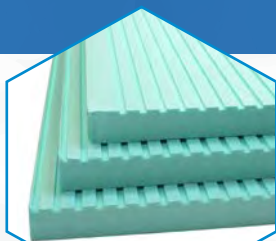
Code	Size	Colour	Area
M13	2.07 x 10m	Black	20m ²
M4	2.07 x 20m	Black	40m ²

TYPE C - CDM SYSTEM

INSULATION & DRAINAGE

A well installed drainage system with inspection ports ensures that the cavity drain system is maintainable, as it can be inspected and cleaned at regular intervals.

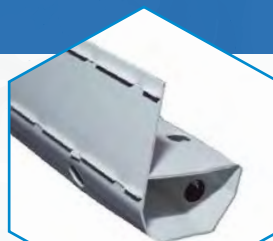
Utilising XPS insulation as a spacer also delivers design benefits, financial and environmental savings, ease of building, and energy efficiency improvements.



CDM Fibran XPS-500C - Closed Cell Insulation Board

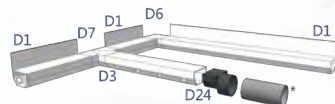
- » 50mm deep insulation board made from rigid extruded polystyrene (XPS)
- » Forms a 50mm spacer adjacent to CDM BaseDrain and FloorDrain channels
- » Rated at 500 kPa compressive strength

Code	Board Size	Pack Size
500C	50 x 1000 x 600mm	4.8m ² (8 boards)



CDM BaseDrain & CDM FloorDrain - Drainage System

- » Receives water ingress at the perimeter and construction joints then discharges it to a safe form of drainage
- » Use alongside cavity drain membranes (p27) and CDM Pumping System (p31)



Code	Name	Colour
D1	CDM BaseDrain x 2m	White
D3	CDM FloorDrain x 2m	White
D6	CDM BaseDrain Corner	White
D7	CDM BaseDrain T-Piece	White
D22	CDM Basedrain Joint Tape	White
D24	CDM BaseDrain Adaptor	Black
D26	CDM BaseDrain Inspection Port Kit	White

CDM BaseBoard - Above Slab Drainage Conduit

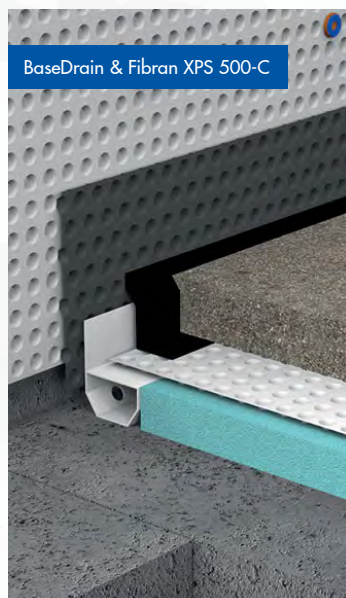
- » Drainage for capturing and removing water at the wall/floor junction

Code	Product	Colour
D9	Outside Corner	White
D10	Inside Corner	
D11R/D11L	End Cap Right/Left	
D12	Length (2.4m)	
D12H	Hanger	
D13	Connector	
309-M	HydroTank 309 Adhesive	

CDM Insulation Fixings - For Fixing Insulation Boards

- » Plug for mechanically fixing CDM Fibran XPS 500-C insulation boards to the concrete slab or raft
- » Ideal for where a lightweight floor finish will be above the insulation

Code	Size	Colour	Units
IF90	90 x 10mm	White	200

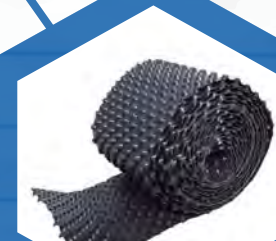


FEATURED PRODUCT - CONDENSATION STRIP

In instances where internal humidity levels result in condensation on internal walls, there needs to be a way of ensuring that it doesn't collect on those surfaces and damage the finishes - Newton Condensation Strip allows this condensation to be collected and removed by the cavity drain waterproofing system.

PLUGS, TAPES & ANCILLARIES

To complement the membrane, insulation and drainage core components of the CDM System (p9), it's important to have a choice of the right fixings, sealants and other ancillaries to ensure your system is installed to absolute perfection.



CDM Condensation Strip - To Collect Condensation

- » Forms an 8mm gap between the CDM BaseDrain channel (p28) and the wall membrane (p27)
- » Ensures internal condensation is collected by the CDM BaseDrain

Code	Size	Colour
M14	250mm x 20m	Black



CDM 906 Lime Inhibitor - For New Concrete Surfaces

- » Applied to concrete surfaces prior to the installation of the CDM System (p9)
- » Prevents free lime leaching from the concrete into the drainage system
- » Extremely easy to install and handle

Code	Size	Colour	Application Rate
LC1	1L	White	100m ² per litre



CDM MultiPlug - Cavity Drain Membrane Fixing Plug

- » Specialist fixing plug for securing the CDM System (p9) to the walls
- » Provides a fixing point for 5mm screws and Helifix wall ties (p30)

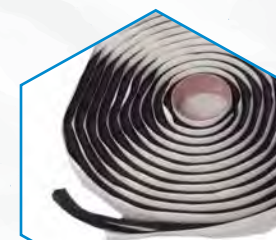
Code	Size	Colour	Units
A1 A24	10 x 57mm (no washers)	Blue/ Orange	100



CDM NuSeal Plug - Fixing to Vaults and Soffits

- » A longer fixing than the CDM MultiPlug, sealed with CDM Rope
- » For fixing CDM System membranes to vaulted ceilings and sloping soffits

Code	Size	Colour	Units
A2 A3	70 x 11mm	Red White	100



CDM Rope - Sealing Around NuSeal Plugs

- » 10mm wide bead of butyl
- » Use a small quantity to form a sealing grommet at the base of the CDM NuSeal Plug when fixing CDM System membranes to vaults and soffits

Code	Size	Colour
A6	10mm x 10mm x 4.75m	Black

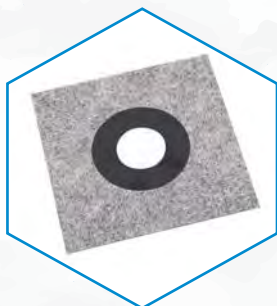
TYPE C - CDM SYSTEM



CDM Joint Tape - Sealing Within Membrane Joints

- » Double-sided butyl sealing tape
- » When overlapping CDM System membranes, use the tape to seal the flanged and the stud-into-stud laps between adjacent sheets

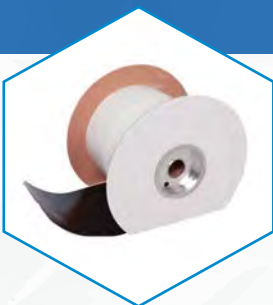
Code	Size	Colour
A5	30mm x 2mm x 22.5m	Black



Pipe Collar - Preformed Flexible Pipe Seal

- » Flexible pipe seal for pipes from 75-110mm in diameter
- » For sealing the junction between the flat surface of CDM System membranes and protruding pipes

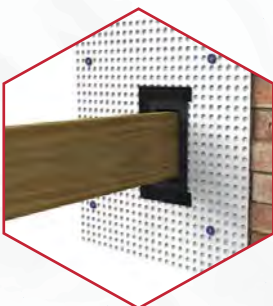
Code	Suitable for	Colour	Units
A35	75 - 110mm pipes	Blue	1



CDM OverTape - Sealing Over Membrane Joints

- » Single-sided butyl sealing tape
- » Used for reinforcing over membrane joints and detailing around protrusions

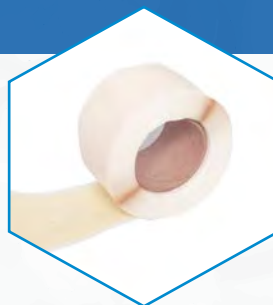
Code	Sizes	Colour	Units
A7	150mm x 20m	Black	2
A8	100mm x 20m	Black	4
A9	150mm x 20m	White	2



Newtonite Joist Liners & Newtonite Pipe Sleeves

- » Pipe sleeve BX3 - Preformed seal for 110mm O/D waste pipe entries
- » Joist liner BX4 - Made-to-measure lining for steel or timber joist ends

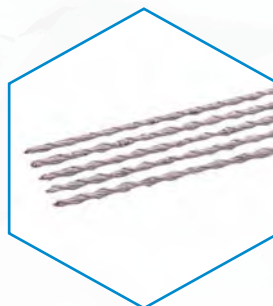
Code	Size	Colour	Units
BX3	Fits 110mm pipe	Black	1
BX4	Made to order	Black	1



Mesh Tape - Sealing Over Meshed Membrane Joints

- » Single-sided sealing tape with a meshed upper surface
- » Used the same as CDM OverTape but to meshed CDM System membranes where a meshed surface is required

Code	Size	Colour	Units
A25	100mm x 10m	White	1



CDM Helical MultiPlug Tie - Tie Walls into the MultiPlug

- » Range of wall tie lengths for use with the CDM MultiPlug fixing plug (p29)
- » Supplied with hand fixing tool (WTT)

Code	Lengths	Colour	Units
WT + Size	155, 170, 195, 220, 245, 270, 295, 325 mm	Stainless Steel	100

FEATURED PRODUCT - TITAN-PRO SUMP CHAMBER

Designed for use within the Newton CDM System (p9), the adjustable neck allows installation at a fixed height relative to the slab, ensuring drainage connections are always the same height above the concrete. The unique shape also allows for connections to be made to either a side wall or to a corner.

CDM SUMP & PUMP SYSTEMS

Our bespoke cavity drain pumping systems incorporate the specially designed Titan-Pro sump chamber for cavity drain membrane systems, and pairs it with class-leading pumps both in automatic and manual versions, and with multiple options for pumping power.

We've made it easy to select a pump configuration for your project - simply order from our list of chamber codes with or without the relevant pump options.

SUMP CHAMBERS

If you only need a chamber or want to order your pumps separately, choose from our drilled and undrilled Titan-Pro chambers, both with and without lids.

Code	Drilled	Lid	Description
TPC	No	No	Titan-Pro Sump Chamber only
TPCD	Yes	No	Titan-Pro Sump Chamber - Drilled
TPC&L	No	Yes	Titan-Pro Sump Chamber with Lid
TPCD&L	Yes	Yes	Titan-Pro Sump Chamber with Lid & Drilled

SUMP CHAMBERS & PUMPS

For more information on the individual pump units that can be ordered with the Titan-Pro chamber, see our full list of pumps on pages 36 and 37.

Code	Pump Model	No. of Pumps	Auto or Manual	Rising Mains	Alarm Included
CDM1	CP250	2	Automatic	1	PA50
CDM2	CP250	2	Manual	1	No
CDM3	CP400	2	Automatic	1	PA50
CDM4	CP400	2	Manual	1	No
CDM5	NP400	2	Automatic	1	PA50
CDM6	NP400	2	Manual	1	No
CDM7	CP750	2	Automatic	1	PA50
CDM8	CP750	2	Manual	1	No
CDM9	CP750	2	Automatic	2	PA50
CDM10	CP750	2	Manual	2	No
CDM11	NP750	2	Automatic	1	PA50
CDM12	NP750	2	Manual	1	No
CDM13	NP750	2	Automatic	2	PA50
CDM14	NP750	2	Manual	2	No

Titan-Pro sump chamber



TYPE C - CDM SYSTEM

PUMP CONTROL & ALARM SYSTEMS

Choose from a range of control panels to operate, maintain and monitor your pumping system, as well as enhanced capabilities to link into whole house monitoring systems, detect high water levels, and alert clients to alarm events.



Control Panel-Pro - Leading Pump Control Panel

- » The ultimate in pump operation, diagnostics and monitoring
- » CP7 comes fitted with a Dialer (p33)

Codes	Size	Weight	Power Supply
CP2 CP7	290 x 240 x 94mm	3.94kg	2 x 230V AC 1 x Mains 1 x Battery Backup



Pump Controller - Twin Pump Panel for Manual Pumps

- » For use with matched pairs of manual pumps from 250-750 Watts (p36-37)
- » Sophisticated and simple-to-install twin pump control system
- » Automatically tests pumps every 7 days

Code	Size	Power Supply
CP9	300 x 194 x 58mm	230V AC

FEATURED PRODUCT - DIALER

Provide enhanced alarm capability to the High Water Alarm by fitting a Dialer unit that will contact up to 8 persons by text or speech to warn of an alarm condition. The unit can be ordered either on its own (code PA5) or it comes pre-installed as standard within the Control Panel-Pro (p32) under code CP7.



DAB E.Box - Sewage Pump Control Panel

- » Protects and operates one or two submersible sewage pumps
- » Compatible with pumps from 1-12 amps, and power up to 2.2 kilowatts

Code	Size	Weight	Power Supply
CP8	320 x 260 x 120mm	4kg	1 x 230V



High Water Level Alarm - Use with Titan Sump Chambers

- » Detects high water levels in chambers and sounds a 90dB alarm if activated
- » For single or twin pump systems where no control panel is installed
- » Battery-operated - standard 9V battery

Code	Size	Power Supply
PA50	152 x 92 x 37mm	9V DC Battery Supplied



Dialer - Text/Speech Alarm Enhancement

- » Contacts up to 8 persons by text/speech to warn of an alarm event
- » Included with CP7 panel (p32)

Code	Size	Colour
PA5	140 x 115 x 30mm	12V DC - Battery lead (PA6) or mains adaptor (PA7) sold separately



Pump Controller and Victron Inverter installed in partnership

BATTERY BACKUP & POWER INVERTERS

Ensure that your pumping system will always continue to operate, even during power outages, by delivering battery stored DC energy to our range of powerful inverters, turning it into clean and efficient 230-volt AC power for the pumps.



Victron Inverters - Power Interruption System

- » Ensure continued operation of pumping systems during power disruption
- » Matched with 40-200 Ah batteries

Code	Name	Size (mm)
BB5	MultiPlus 12/500/20	311 x 182 x 100
BB1	MultiPlus 12/800/35	360 x 240 x 100
BB11	MultiPlus 12/1600/70	470 x 265 x 100



Batteries - 40, 60, 100 & 200Ah High Grade Batteries

- » Single units or battery banks provide 12V power to the Victron Inverter

Codes	Amp Hours	Power	Weight
BB23	40Ah	12V DC	13kg
BB20	60Ah		18kg
BB21	100Ah		33kg
BB22	200Ah		61kg

TYPE C - CDM SYSTEM

TELEMETRY & BACKUP ANCILLARIES

A number of sophisticated options are available to add to the Victron Inverter units (p33) and provide a host of features for both controlling and monitoring your battery backup system.



BMV-712 - Smart Battery Monitor

- » Bluetooth capability allows real-time battery monitoring via smartphone
- » Ensures future connectivity as and when all Victron components are also upgraded to include Bluetooth

Code	Dimensions	Supply Voltage
BB6	69 x 69mm Front Bezel	6.5-70V DC



Smartshunt - All-in-One Bluetooth Battery Monitor

- » All-in-one alternative to the BMV, delivering information to your phone via the VictronConnect app
- » Connects to the Cerbo GX control centre which can also read this unit

Code	Dimensions	Supply Voltage
BB15	H46 x W120 x D54mm	6.5-70V DC



Cerbo GX - Cloud Connected Control Centre

- » Allows full control over your battery backup system, wherever you are
- » Connect remotely via the cloud portal, directly using the GX Touch, or via the VictronConnect app using Bluetooth

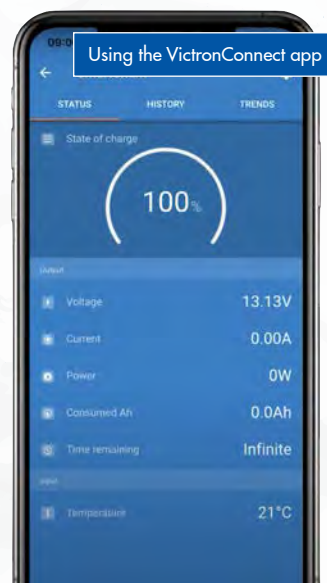
Code	Dimensions	Supply Voltage
BB12	H78 x W154 x D48mm	8-70V DC



GX Touch - Touch Screen Display for the Cerbo GX

- » Screen display for the Cerbo GX
- » Five inch touch screen provides instant system overview and adjustment
- » Simple to install and waterproof

Code	Description	Further Information
BB13	GX Touch 50	Supply Voltage: 8-70V DC
BB14	H87 Wall Mount	H87 x W128 x D12.4 mm



Using the VictronConnect app

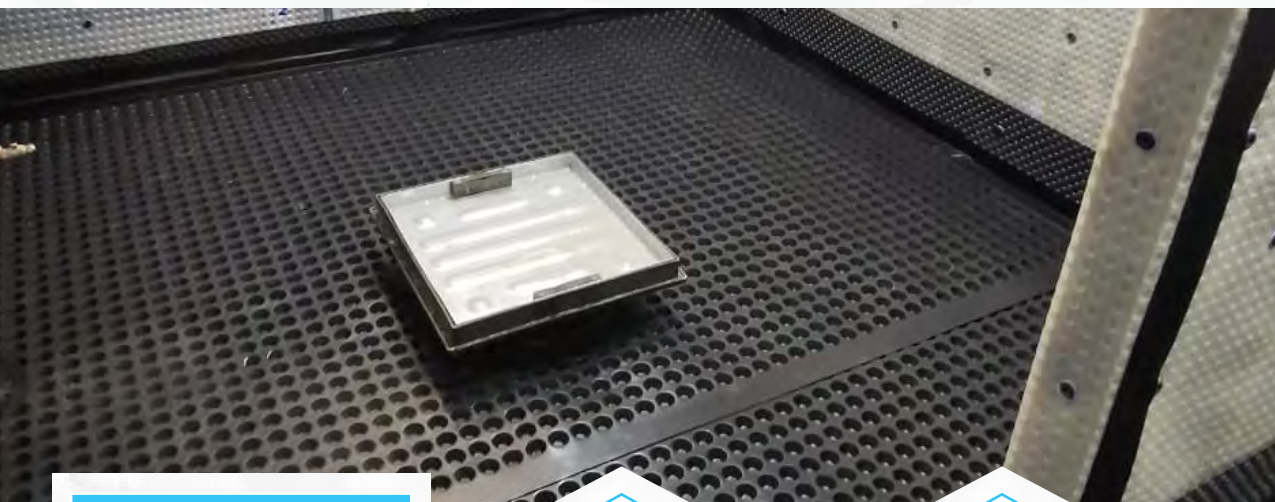
The Newton CDM System offers a comprehensive, failsafe form of Type C internal waterproofing



PUMPS & PUMPING SYSTEMS

FEATURED PRODUCT - HIGH QUALITY CLEAN WATER PUMPING

Our most commonly used pump installed as part of the CDM Sump & Pump System (p31) within the Newton Titan-Pro chamber. Available in automatic or manual, suitable for use with Victron Power Inverters (p33), and automatic versions fitted with an adjustable and flexible vertical float switch.



INDIVIDUAL PUMP UNITS

Manual and automatic pump options suitable for clean water, ground water, surface water, low-level pumping and macerating waste water.

Depending on the unit, our pumps are available with warranties of up to 3 and 5 years when serviced annually by an approved engineer.



CP150 - High Quality 150W Clean Water Pump

- » Ideal for ground water in basements and cellars with the CDM System (p9)
- » Automatic version only
- » 150 Watt motor pumps up to 160 litres/minute or up to a 6-metre head

Code	Description	Discharge Size
P30	150W - Automatic	1.5" BSP



CP250 - High Quality 250W Clean Water Pumps

- » Ideal for ground water in basements and cellars with the CDM System (p9)
- » 250 Watt motor pumps up to 210 litres/minute or up to an 8-metre head

Code	Description	Discharge Size
P31	250W - Automatic	1.5" BSP
P29	250W - Manual	



CP400 - High Quality 400W Clean Water Pumps

- » Ideal for ground water in basements and cellars with the CDM System (p9)
- » 400 Watt motor pumps up to 290 litres/minute or up to a 10-metre head

Code	Description	Discharge Size
P32	400W - Automatic	2" BSP
P28	400W - Manual	



NP400 - High Quality & Head Clean Water Pump

- » Maximum head of 12.2 metres
- » Automatic version has vertical float switch to control operation
- » Suitable for rain/ground water

Code	Size	Discharge Size
P2	400W - Automatic	2" BSP
P3	400W - Manual	



NP400 PP - Puddle Pump

- » Designed to pump down to extremely low levels - just 1mm in depth
- » Available individually as a manual pump or with switching capability in the Low Level Pumping System (p37)
- » Suitable for rain and ground water

Code	Description	Discharge Size
P13	400W - Manual	2" BSP



NP400 LLPS - Low Level Pumping System

- » Small control panel ensures accurate and safe switching of the NP400 PP (p37) with water levels of just 10mm
- » Will pump down to just 1mm depth
- » Suitable for rain and ground water

Code	Description	Discharge Size
SP1	Panel + 400W Pump	2" BSP



NP750 - High Performance Clean Water Pump

- » Ideal for ground water in basements and cellars with the CDM System (p9)
- » 750 Watt motor pumps up to 360 litres per minute or up to a 12.5-metre head

Code	Description	Discharge Size
P5	750W - Automatic	2" BSP
P6	750W - Manual	



DAB Genix - Automatic Macerator Lifting Station

- » Ideal for new bathroom or kitchen installations requiring efficient removal of waste water

Codes	Size	Weight
P67 - Comfort 130	351 x 629 x 178mm	12kg
P68 - 130	351 x 629 x 178mm	12kg
P69 - VT 030	346 x 456 x 178mm	10.3kg

PUMPS & PUMPING SYSTEMS

SURFACE AND/OR FOUL WATER SUMP & PUMP SYSTEMS

Trojan-Pro sump chamber



The Trojan-Pro is a specialist pumping system, available in four sizes and available either as just a chamber or as a fully built sump and pump set-up.

CHAMBERS

Code	Height	Weight	Lid	Description
TR12	1200mm	38kg	No	Trojan-Pro Chamber - 1.2m
TR15	1500mm	45kg	No	Trojan-Pro Chamber - 1.5m
TR18	1800mm	53kg	No	Trojan-Pro Chamber - 1.8m
TR21	2100mm	61kg	No	Trojan-Pro Chamber - 2.1m

SURFACE & FOUL WATER SYSTEMS

Code	Pumps	Auto or Manual	Sump Height	Water Type	Alarm Included
S1	CP400 x 2	Automatic	1200mm	Surface	PA50
S2	CP400 x 2	Manual	1200mm	Surface	Control Panel
S3	CP400 x 2	Automatic	1500mm	Surface	PA50
S4	CP400 x 2	Manual	1500mm	Surface	Control Panel
S6	NP750 x 2*	Manual	1500mm	Surface	Control Panel
S7	NP750 x 2*	Manual	1800mm	Surface	Control Panel
S8	NP750 x 2*	Manual	2100mm	Surface	Control Panel
F1	Feka VS 1000	Manual	1200mm	Foul	Control Panel
F2	Feka VS 1000*	Manual	1200mm	Foul	Control Panel
F3	Feka VS 1000	Manual	1500mm	Foul	Control Panel
F4	Feka VS 1000*	Manual	1500mm	Foul	Control Panel
F5	Feka VS 1000*	Manual	1800mm	Foul	Control Panel
F6	Feka VS 1000*	Manual	2100mm	Foul	Control Panel

*pumps fitted on rails

FEATURED PRODUCT - NEWTON FOUL WATER PUMP STATIONS

Consisting of a glass-reinforced plastic sump chamber (available in a range of sizes) installed with dual pumps, discharge pipework and float switches in the chamber, and a control panel for operating the pumps, our sump stations are the perfect solution for ready-made sewage and foul water pumping.

GROUND AND/OR SURFACE WATER SUMP & PUMP SYSTEMS

Titan sump chamber



CHAMBERS

Code	Lid Included?	Description
T2C	No	Titan Sump Chamber only
T2C&L	Yes	Titan Sump Chamber - Drilled

GROUND AND SURFACE WATER SYSTEMS

Code	Pump Model	No. of Pumps	Auto or Manual	Rising Mains	Alarm Included
T1	CP150	1	Automatic	1	PA50
T2	CP250	1	Automatic	1	PA50
T3	CP250	2	Automatic	1	PA50
T4	CP400	2	Automatic	1	PA50

FOUL WATER SUMP & PUMP SYSTEMS

A foul/sewage sump chamber



1.1-METRE DIAMETER SUMP CHAMBERS

Code	Twin Pumps	Auto or Manual	Sump Height	No. of People	Alarm Included
FL1	Grundfos AP50B.50.08.1V	Manual	1.1m	3	Control Panel
FL2		Manual	1.5m	6	Control Panel
FL3		Manual	2.2m	10	Control Panel
FL4		Manual	2.6m	13	Control Panel

1.8-METRE DIAMETER SUMP CHAMBERS

Code	Twin Pumps	Auto or Manual	Sump Height	No. of People	Alarm Included
FVL1	Grundfos SLV.65.65.22.2.50D.C	Manual	2.1m	20	Control Panel
FVL2		Manual	3.4m	40	Control Panel

GAS MEMBRANES

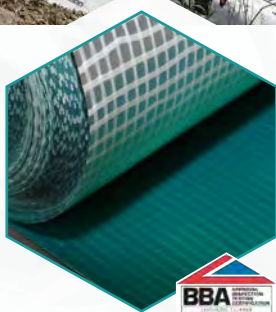
LIQUID-APPLIED WATER AND GAS BARRIERS

Our choice of liquid-applied waterproofing and gas protection membranes includes single-component products, BDA certified products, and advanced two-component products, providing you with the ability to protect your structures against not just water, but also radon, methane and carbon dioxide.



GROUND GAS PROTECTION MEMBRANES

Through our partnership with A. Proctor Group, who have been in the UK gas protection market for over 15 years, we can provide high quality membranes to protect against the ingress of ground gas and vapours on contaminated land.



Protech GM Super - Loose Laid Ground Gas Barrier

- » Aluminium foil layer protects against methane, carbon dioxide and radon
- » Compliant with Ciria 665, BS 8485 & Local Authority Ground Gas Handbook
- » Robust, flexible & easy to install

Code	Size	Colour	Area
PSGM	2m x 50m	Green/Silver	100m ²



Protech VOC Flex - High Performance VOC Barrier

- » Six layer barrier for brownfield sites needing protection from dangerous contaminants such as hydrocarbons
- » Robust, flexible & easy to install
- » Also a high performance DPM

Code	Size	Colour	Area
PVF	2m x 50m	Orange	100m ²



HydroBond 2K-Flex - Flexible, Reinforced Bitumen Coating

- » External waterproofing of below-ground structures and retaining walls
- » Complete vapour barrier
- » Flexible, bridging cracks up to 2mm
- » Easily applied up to 7mm thick

Code	Size	Colour	Application
HB-2K	30L	Black	5.6L/m ²



HydroBond 109-LM - Radon Certified Rubber Membrane

- » External waterproofing of earth-retaining structures such as basements
- » Radon certified vapour barrier
- » Extremely puncture resistant & flexible

Code	Description	Size	Application
109MV	Medium viscosity	20L	1.6 - 3.2 L/m ²
109LV	Low viscosity		



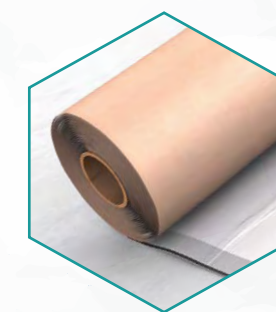
Protech LAGM - Liquid Applied Gas Membrane

- » Provides a gas-resistant seal for hard-to-treat areas where the Protech GM Super (p40) cannot be used
- » Single component protects against water, radon, methane and CO₂

Code	Size	Application
PLAGM	20L	> 0.8 L/m ² (in two coats)

BELOW GROUND GAS BARRIER MEMBRANES

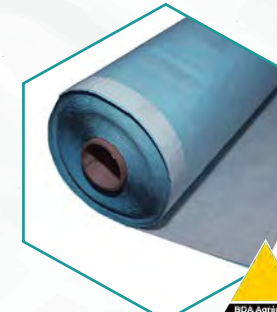
When building below-ground structures on sites that require additional protection against ground gases, Newton's choice of both pre-applied and post-applied gas barrier membranes are suitable for all project types.



HydroBond-SAGM - Post-Applied Gas Membrane

- » Post-applied to below-ground concrete, block or ICF walls
- » External water and gas proofing for below-ground structures
- » Flexible and durable membrane

Code	Size	Colour	Area
401GM	1 x 20m	White	20m ²



HydroBond 403 Plus GB - Pre-Applied Gas Barrier

- » Continuous external waterproofing to below-ground concrete structures
- » Resistant to radon, carbon dioxide and hydrocarbons in the ground
- » Self-healing when punctured

Code	Size	Colour	Area
HBGB	1.5m x 20m	White/Blue	30m ²

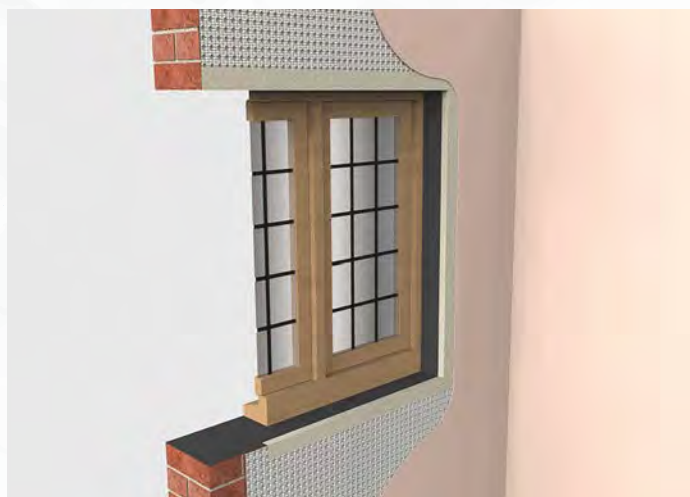
DAMP PROOFING NEWTONITE SYSTEM



DAMP PROOFING

Damp issues take many forms, from rising damp to penetrating and hygroscopic damp, all of which require correct identification and treatment.

All forms of damp can cause problems to internal wall finishes and contribute to an unhealthy environment within your property. A permanent solution, which combines the correct Newton damp proofing products in order to effectively combat the source of the problem, is therefore essential.



ABOVE GROUND DAMP PROOFING MEMBRANES

Whether you have issues with rising, penetrating or hygroscopic damp, the Newtonite damp proofing membrane system can provide a permanent and effective solution, utilising our range of high quality and BBA approved membranes, which are also quick, clean and easy to install in all properties.



Newtonite 803 - 3mm Damp Proofing Membrane

- » For above ground scenarios where a meshed surface is not required
- » Isolates internal walls from damp
- » 3mm deep to maximise internal space

Codes	Sizes	Colour	Area
M19	1 x 10m	White/Clear	10m ²
M20	2 x 20m		40m ²



Newtonite 803 Mesh - 3mm Meshed Damp Membrane

- » BBA certified with a rot-proof mesh for plaster, render or dot & dab boards
- » Quick and easy to install and finish

Codes	Sizes	Colour	Area
M16	1 x 10m	White/Clear	10m ²
M21	1 x 20m		20m ²
M22	2 x 20m		40m ²



Newlath 805 Mesh - 5mm Meshed Damp Membrane

- » Meshed surface is a perfect key for plaster, render or dot & dab boards
- » Quick and easy to install and finish

Codes	Sizes	Colour	Area
M8	1.5 x 5m	White/Clear	7.5m ²
M9	1.5 x 10m		15m ²
M10	2 x 20m		40m ²

DAMP PROOFING ANCILLARIES

A selection of specialist ancillary products that are critically important for the correct installation of Newtonite System membranes, including fixing to different substrates, sealing the membranes and dealing with protrusions.



Newtonite 801 Mastic - Sealing Around Fixing Holes

- » Applied to Newtonite System plugs (p44) to seal membrane penetrations
- » Prevents a 'bridge' between the damp substrate and the new internal surface
- » Applicable to most building materials

Code	Size	Colour	Units
A18	0.31 litre tube	White	1



CDM MultiPlug - Damp Proof Membrane Fixing Plug

- » Specialist fixing plug for securing the CDM System (p9) to the walls
- » Provides a fixing point for 5mm screws and Helifix wall ties (p45)

Code	Size	Colour	Units
A1 A24	10 x 57mm (no washers)	Blue/ Orange	100

DAMP PROOFING - NEWTONITE SYSTEM

FEATURED PRODUCT - ELECTRICAL PATRESS BACK BOX LINERS

Waterproof linings for both single- and double-sized electrical pattress boxes. Formed from a single piece of plastic to avoid joints that might leak, they are simply sealed to the wall membrane with CDM Joint Tape (p30), and sealed with CDM OverTape (p30) or Mesh Tape (p44) to meshed membranes.



Newtonite Mesh Plug - Fixing Newlath 805 Membrane

- » For fixing Newlath 805 Mesh (p43) to internal, above-ground walls
- » Use a 7mm SDS bit to drill a hole before hammering in the plug
- » Seal with Newtonite 801 Mastic (p43)

Code	Size	Colour	Units
A16	7 x 50mm	Brown	250



Newtonite Plug - Fixing Newtonite 803 Membrane

- » For fixing Newtonite 803 Mesh (p43) to internal, above-ground walls
- » Use a 7mm SDS bit to drill a hole before hammering in the plug
- » Seal with Newtonite 801 Mastic (p43)

Code	Size	Colour	Units
A20	7 x 50mm	Blue	160



Newtonite Cob Plug - Fixing to Less Stable Substrates

- » For fixing Newtonite System damp proofing membranes (p43) to less stable substrates
- » The expansion pin can be fitted to the plug to gain better traction

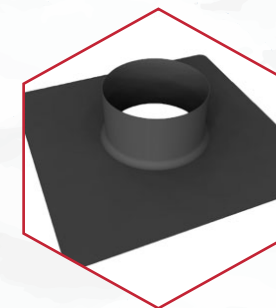
Code	Size	Colour	Units
IF90	10 x 90mm	White	200



Tarmac Whitewall - Plaster for Meshed Membranes

- » The best finishing plaster to apply to our Newtonite mesh membranes (p43)
- » Provides a smooth white finish that is both hard and durable
- » Applied in two coats of 6mm each

Code	Size	Colour	Application
A11	25kg	White	13-15 kg/m ²



Newtonite Pipe Sleeve - Preformed for 110mm Pipe

- » Waterproof sleeve for 110mm O/D waste pipe entries/protrusions through wall or floor membranes
- » Seal to membrane with CDM Tape and overseal with CDM OverTape (p30)

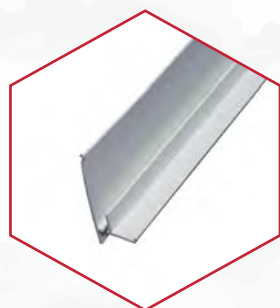
Code	Size	Colour	Units
BX3	Fits 110mm pipe	Black	1



Back Box Liners - Lining for Electrical Pattress Box

- » Waterproof lining for single and double sized pattress boxes
- » Ensures the continuity of the membrane behind the box

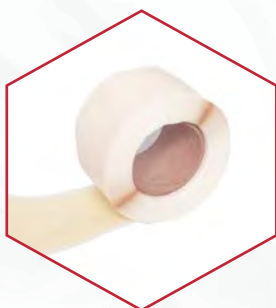
Code	Size	Dimensions	Units
BX1	Single Box	134 x 134 x 35mm	1
BX2	Double Box	200 x 134 x 35mm	



Newtonite Plaster Stop - For Newtonite 803/Newlath 805

- » Use with Newtonite 803 Mesh and Newlath 805 Mesh (p43) as a plaster stop for the meshed membranes
- » Ensures that the plaster/render will stop short of reaching the floor

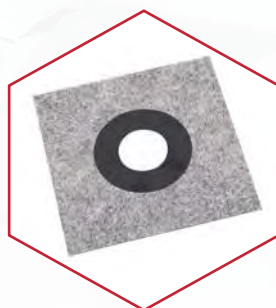
Code	Length	Colour	Units
A19	2m	White	1



Mesh Tape - Sealing Over Meshed Membrane Joints

- » Single-sided sealing tape with a meshed upper surface
- » Use the same as CDM OverTape but to meshed CDM System membranes where a meshed surface is required

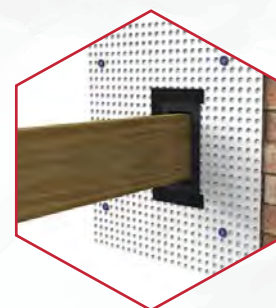
Code	Size	Colour	Units
A25	100mm x 10m	White	1



Pipe Collar - Preformed Flexible Pipe Seal

- » Flexible pipe seal for pipes from 75-110mm in diameter
- » For sealing the junction between the flat surface of CDM System membranes and protruding pipes

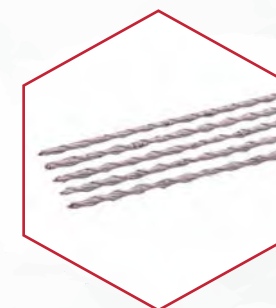
Code	Suitable for	Colour	Units
A35	75 - 110mm pipes	Blue	1



Newtonite Joist Liner - Lining for Steels & Joist Ends

- » Made to measure waterproof lining for steel/timber joist ends, ensuring the membrane continuity behind the joist
- » Seal to membrane with CDM Tape and overseal with CDM OverTape (p30)

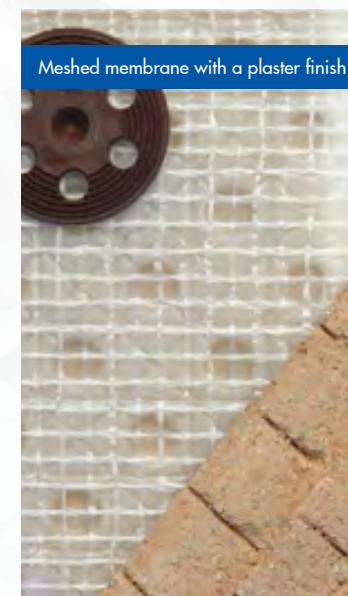
Code	Size	Colour	Units
BX4	Made to order	Black	1



CDM Helical MultiPlug Tie - Tie Walls into the MultiPlug

- » Range of wall tie lengths for use with the MultiPlug fixing plug (p29)
- » Supplied with hand fixing tool (WTT)

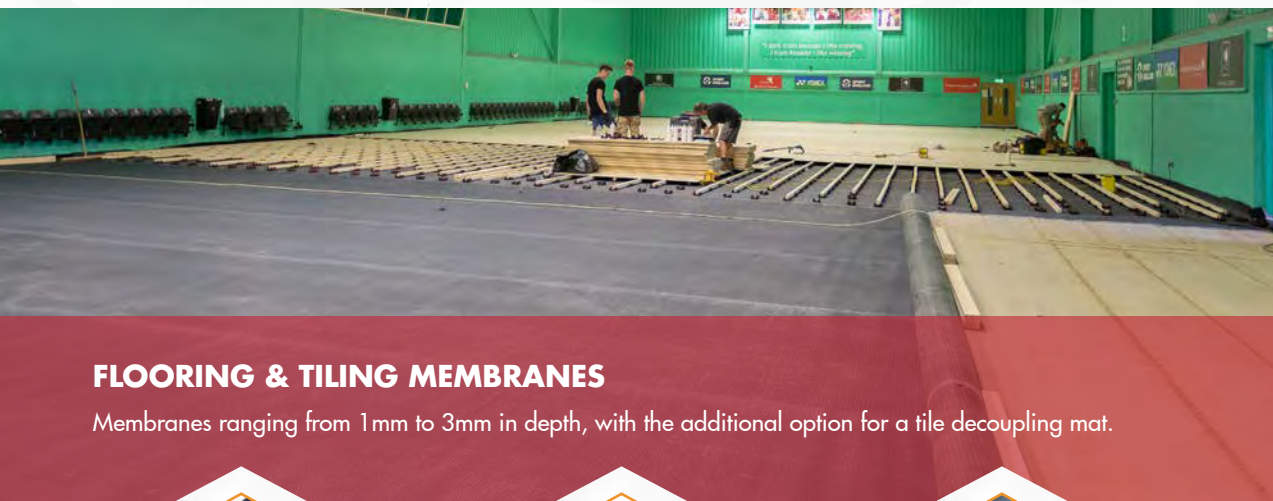
Code	Lengths	Colour	Units
WT + Size	155, 170, 195, 220, 245, 270, 295, 325 mm	Stainless Steel	100



DAMP PROOFING DAMPSAFE SYSTEM

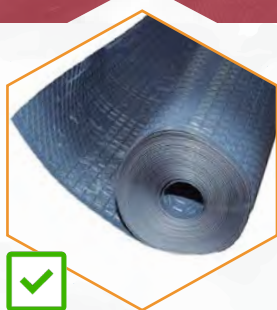
DPCs, DPMs & WALL COATINGS

A choice of physical DPCs and both physical and liquid DPMs, applicable as moisture and vapour barriers, slip membranes, screeding membranes or curing membranes. Our liquid-applied wall coatings are also useful in preventing both internal condensation and external wind-driven rain penetration.



FLOORING & TILING MEMBRANES

Membranes ranging from 1mm to 3mm in depth, with the additional option for a tile decoupling mat.



DampSafe 601 Slimline - Loose Laid Floor Membrane

- » Isolates moisture sensitive flooring from dampness in concrete floor slabs
- » Can be used as the floor membrane as part of the CDM System (p9)
- » Also applicable as a high-load DPC

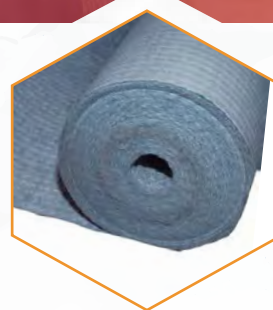
Code	Size	Colour	Area
M6	2.08 x 20m	Grey	40m ²



DampSafe 603 - 3mm Loose Laid Flooring Membrane

- » Suitable for above new & existing floors
- » Does not transfer substrate movement
- » High compressive loading stability
- » Ideal for high performance sports floors

Codes	Sizes	Colour	Area
M19	1 x 10m	White/Clear	10m ²
M23	2 x 20m	White/Clear	40m ²



DampSafe 603 Tile D-Mat - Tiled Floor Decoupling Mat

- » Isolates tiled floors from cracking or movement in the substrate
- » Dimpled membrane ventilates substrate and equalises vapour pressure
- » Adds only 3mm to the floor finish

Code	Size	Colour	Area
M7	1 x 30m	White & Blue	30m ²



DampSafe 802-DPM - 1200 Gauge DPM

- » Installed below concrete floors/screeds where no water pressure is expected
- » Suitable as a DPM, vapour barrier, or a slip, screeding or curing membrane
- » Easy to install as loose-laid membrane

Code	Size	Thickness	Area
802-12	4 x 25m	300 microns	100m ²



Diasen C.W.C. Stop Condense - Anti-Condensation Paint

- » Thermal coating for cold and poorly insulated surfaces
- » Mineral content raises the surface temperature of the treated wall
- » Cost-effective and easy to apply

Code	Size	Colour	Application Rate
CWC	5L	White	0.5 - 0.7 L/m ²



Diasen BKK - Water Repellent for External Walls

- » Protects external surfaces of porous walls from wind-driven rain
- » Transparent coating that still allows vapour transmission from the wall
- » Cost-effective and easy to apply

Code	Size	Colour	Application Rate
BKK	5L	Clear	0.2 - 0.7L/m ²



DampSafe 809-HP DPC - High Performance Polymeric DPC

- » Compatible with all common building materials and all different DPC designs
- » Extremely tough and durable

Code	Widths (mm)	Length	Colour
809-Width	100, 150, 225, 300, 337.5, 450, 600, 900	20m	Black



DampSafe DPM - Damp Tolerable Membrane

- » Provides a DPM/vapour barrier to damp, non-porous concrete & screeds
- » Can be applied to damp concrete or screed just 7 days after placement

Code	Size	Colour	Application Rate
902-P	5.2kg	Black	1st coat 0.35kg/m ² 2nd coat 0.20kg/m ²



COATINGS NEWCOAT SYSTEM

STRUCTURAL REPAIRS LEAKINJECT SYSTEM

INJECTION RESINS & REPAIR PRODUCTS

A range of high quality polyurethane and acrylic injection resins for all forms of repair and leak prevention.

HARD WEARING COATINGS

Fast-curing, liquid-applied protective and decorative coatings for internal flooring applications.



NewCoat 701-HB - High Build Epoxy Floor Coating

- » Waterproof and tough floor coating or internal coating for concrete/steel tanks
- » Easily applied to concrete, steel, etc
- » Solvent-free and provides a chemical and abrasion-resistant finish

Code	Size	Colour	Application
701-HB	5kg	Grey	0.5 - 0.6kg/m ²



DampSafe DPM - Damp Tolerable Membrane

- » Provides a DPM/vapour barrier to damp, non-porous concrete & screeds
- » Can be applied to damp concrete or screed just 7 days after placement

Code	Size	Colour	Application Rate
902-P	5.2kg	Black	1st coat 0.35kg/m ² 2nd coat 0.20kg/m ²



DampSafe 901 Primer - Damp Tolerable for Porous Surfaces

- » Pre-priming damp/porous concrete & screed, such as decks and car parks
- » Can be applied just 7 days after concrete placement

Code	Size	Colour	Application Rate
901-P	5.2kg	Clear	1st coat 0.25kg/m ² 2nd coat 0.17kg/m ²



Leakinject 2K Flex 6812 LV - Fast Foaming PU Resin

- » Two-component, fast foaming PU resin
- » Ideal for temporary sealing of cracks and gaps with high water pressure
- » Cures into a dense, flexible foam

Code	Components	Weights
328	Two	23.45kg 44.75kg



Leakinject Hydrogel 6880 - Ready-to-Use PU Resin

- » Single-component, low viscosity PU
- » Used to stop leaks and water ingress, both pressurised and non-pressurised, in masonry, concrete & underground
- » Reacts with water into a flexible foam

Code	Components	Weight
321	One	25kg



Leakinject UNI 6816 E - PU Resin for Sealing Gaps

- » Single-component, low viscosity PU
- » Used to seal large gaps, cracks or leaks with high pressure or flow
- » Reacts to create a semi-rigid foam

Code	Components	Weights
320	Resin Catalyst	25kg 2.3kg

STRUCTURAL REPAIRS - LEAKINJECT SYSTEM



Tunnelinject 2K 6822 LV - Fast Reacting PU Resin

- » Two-component, fast reacting PU resin
- » Suitable for sealing leaks and consolidating of structures with high water pressure or flow, such as tunnels, shafts and mines

Code	Components	Total Weight
327	Two	46kg



509 Rubber Acryl - Highly Elastic Acrylic Resin

- » Ideal for leak sealing/curtain injection

Code	Components	Weights
324	Resin	24.91kg
	Additive	0.09kg
	Catalyst	2.5kg
	Strengthening Initiator	23.7kg
		0.625kg



Leakinject Steel Packers - Two-Part Injection Packers

- » Suitable for use with both acrylic and polyurethane injection resins
- » Two sizes available as standard, but specialist sizes can also be provided

Code	Size	Colour
P-NH-10-110	10mm x 110mm	Silver/Black
P-NH-13-110	13mm x 110mm	



Leakinject PU Pump - Drill Pump for Polyurethane Resins

- » For pumping PU resins in injection hoses (p21) and for repairs (p49-50)
- » Easy-to-use, drill-powered resin injection pump with single hopper
- » Supplied with adaptor for drill

Code	Weight	Pressure	Delivers Up To
LI-PUMP	7kg	Max. 250 bar	0.75L/min



HydroSeal 203-RM - High Strength Repair Mortar

- » Durable repair of concrete, ideal for bridges, decks, floors and roads
- » Single component, mix with water
- » Resists 10 bar water pressure
- » Rapid curing, even in cold weather

Code	Size	Colour	Yield
203-RM	25kg	Grey	13.3 - 23L

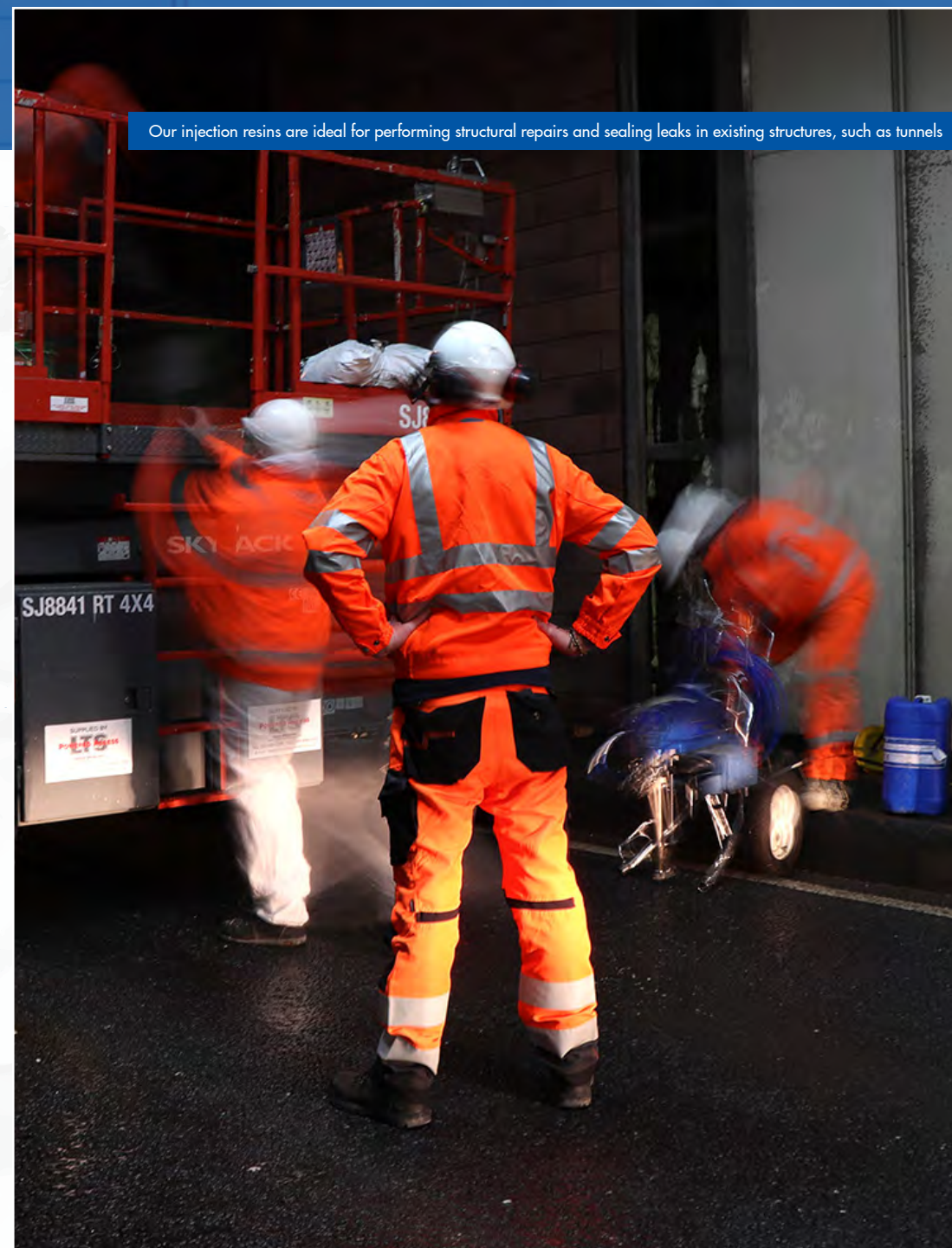


HydroSeal 313-WP - Fast-Set Leak Sealing Compound

- » Instantly stops running water/seepage through masonry or concrete
- » Becomes harder under water pressure
- » Non-shrink and sets in just 2 minutes

Code	Sizes	Colour	Yield per kg
313-WP	5kg 25kg	Grey Brown	0.46L

Our injection resins are ideal for performing structural repairs and sealing leaks in existing structures, such as tunnels



Thanks to our completely independent status, we are able to form exclusive partnerships with some of the leading manufacturers of specialist construction products in the world. This ensures that we can stock and distribute a huge range of additional products for you, alongside our waterproofing systems.

For more information on any of these brands, or for specific product enquiries and prices, please get in touch and request a distribution pack from the Newton team.



A. Proctor Group - Ground Gas Barrier Systems

Based in Scotland, A. Proctor Group are an innovative and market-leading manufacturer of high performance ground gas barriers.

As another proudly independent family business, we are delighted to partner with them in order to stock and supply their products across the UK, including the Protech GM Super and VOC Flex membranes (p40).



ARDEX - High Performance Flooring & Tiling Products

Alongside our comprehensive structural waterproofing systems, we can now also supply ARDEX's entire range of specialist building materials including floor screeds, concrete repair products, smoothing and levelling compounds, and damp proof membranes. Examples include Arditec NA Self-Leveller, Ardex P10 SR Crack Repair Kit, Ardex A46 Repair Mortar, and Ardex WPM 200 Liquid Membrane.



Axter - Podium Deck & Roof Waterproofing

For over 30 years Axter have been leading designers and manufacturers of both new-build and existing roof and deck waterproofing.

Our UK-wide partnership allows us to combine our expertise in below- and above-ground waterproofing systems and bridge the gaps in design and liability when it comes to the interface between these two disciplines.



Diasen - Specialist Waterproof Coatings

Our partnership with Diasen goes back a long way, as one of Europe's leading and most innovative manufacturers focusing on low environmental impact without compromising their high standards. We're proud to offer from Diasen their WATSTOP Epoxy cement coating (p12), their C.W.C. anti-condensation paint (p47) and their BKK external water repellent coating (p47), amongst other products.



Hauff-Technik - Cable Entries & Service Sealing Systems

We are proud to be specialist trade partners to Hauff-Technik in the UK. As one of Europe's leading manufacturers of reliable sealing systems for cable, pipe and line entries, Hauff-Technik's solutions are guaranteed to be absolutely sealed against water and gas. As well as the service entry sealing systems in this brochure (p22-24), we can also order bespoke systems directly from Hauff-Technik for your project.



Prestige Air - Patented Gas Protection & Waterproofing

Newton Waterproofing and Prestige Air are the designers and holders of the patent for the PAC-500 "positive air curtain" method for combining both waterproofing and gas mitigation systems in below-ground construction. The system complies with BS 8485, protects against radon, methane, carbon dioxide and hydrocarbons, and achieves a Grade 3 "completely dry" internal environment as per BS 8102:2009.



RiveStop - Patented Tie-Bolt Hole Waterproofing

We are the UK licensed partner for the unique RiveStop system - a patented method for sealing tie-bolt holes in concrete walls that also delivers significant efficiency improvements on site.

The three simple components of the RiveStop method (p24) consistently deliver time and cost savings of up to 90% compared to alternatives.



Tarmac - Construction Grouts & Repair Products

We're now partnered with Tarmac Ltd, the UK's leading sustainable building materials business. This means that Newton can offer stock from Tarmac's range of non-shrink construction grouts, high performance repair concretes & rapid-drying plaster products. Further ranges of specialist construction products are also readily available, including mortars, lime, & highway products.



TRADECC - Specialist Injection Resins

We are proud to have been the exclusive UK distributor for Belgian injection resin specialists TRADECC since 2019. As well as the existing range of injection resins for joint waterproofing (p21-22) and structural repairs and leak sealing (p49-50) we can also provide UK customers with access to the entire range of high-quality TRADECC products for water sealing, soil consolidation, and structural and concrete repair.

THE DIFFERENT TYPES OF INSURANCE

The term 'guarantee' is used in a number of ways to describe different forms of protection. It is therefore important to understand the difference between these forms of insurance and what they actually cover.

Product-Only Warranties

A product warranty is a statutory requirement that provides a replacement if the product is defective. Whilst it is important to choose products with a warranty from a reputable supplier, it should be understood that product warranties specifically exclude design, workmanship and/or installation defects. All our products are supplied with warranties, but you should be aware of the limitations.

Unfortunately, these warranties are sometimes sold as waterproofing guarantees, so it is important that the end-client is aware that it does not protect them from design and/or installation failures.

Installation Guarantees

Supported by the contractors' insurer, these protect against defects in the design and installation of the waterproofing. The insurer will step in where the cost of the repair is beyond the means of the contractor, therefore protecting the client from the risk that the contractor liquidates their company to avoid the costs.

Other costs involved in the repair process will be included in high quality installation guarantees, so the client should examine the guarantee carefully. However, if the contractor goes out of business before the claim then the guarantee goes with them.

Limited Repair Guarantees

These are common in the waterproofing industry and often mistaken for installation guarantees. However, in most cases the 'guarantee' is limited to the value of the product purchased; and in some cases just to the value of the product installed within the area of the leak.

This means that the cover for repairs is limited to a predetermined cost. If the repair is not successful for that cost, it is either abandoned or the additional work and materials become chargeable.

Insurance Backed Guarantees (IBGs)

IBGs apply when the contractor is unable to honour their guarantee due to ceasing to trade. Where a reputable contractor is used, the repair will be carried out under the terms of their installation guarantee.



The ability to offer an IBG is a requirement of being a Newton Specialist Contractor. Always check the policy wording to confirm exactly what is covered and the quality of the insurer.

Latent Defects Insurance (LDI)

Newton's Latent Defects Insurance is a comprehensive policy that is purchased directly from our insurer. After the first 2 years, all repairs due to product defects, design issues, workmanship and/or installation failures are the responsibility of the insurer. Even if the contractor ceases trading, the insurer still covers the costs. All of Newton's specialist contractors, waterproofing specifications and products have also been required to pass a rigorous audit by our A-rated insurer, ensuring the quality of the guarantee.

Newton's two insurance backed guarantees are meaningful, single-point waterproofing guarantees that provide complete protection for the client, the specifier, and the contractor.

Both guarantees have been exclusively selected for Newton Waterproofing Systems and are underwritten by an A-rated, UK-based insurer. There is no better insurance backed protection available from another supplier in the UK waterproofing market, making Newton your safest partner when specifying below-ground waterproofing.

	 NEWTON INSURANCE BACKED	 NEWTON LATENT DEFECTS
Insurance Policy Term	10 years	12 years
Maximum Sum Insured	£5,000,000	£5,000,000
Cover Included For	Defects arising from workmanship & materials	Defects arising from workmanship, materials & design
Geographical Availability	United Kingdom (including Northern Ireland)	United Kingdom (including Northern Ireland)
Cover If The Contractor Ceases Trading?	Yes	Yes
Contractor Liability Period	Full term	2 years
Administration Fee	£275 payable to Building and Land Guarantees	£275 payable to Building and Land Guarantees
Insurance Premium	2.5% (minimum £750) of the contract value (incl. VAT) plus Insurance Premium Tax (IPT).	Calculated on a project-specific basis (minimum £1,000) as a percentage of the waterproofing contract value (incl. VAT), plus Insurance Premium Tax (IPT).

This document is intended as a summary/guide only, and for specific details you should directly contact Building and Land Guarantees Ltd directly, Newton's FCA regulated independent broker (authorised and regulated by the Financial Conduct Authority, registration number 711177).

Contact details: Building and Land Guarantees Ltd, Registered number 5742263. Registered at BLG House, 86a High Street, Whetstone, Leicestershire, LE8 6LQ. Contact by emailing owen.wright@buildingandland.co.uk or call 0116 2847038

NEWTON SPECIALIST BASEMENT CONTRACTORS

Newton's nationwide network of specialist waterproofing contractors (NSBCs) work in partnership with us to provide the highest quality products, design, and installation in all aspects of domestic and commercial waterproofing.

High Quality Contractors

All NSBCs adhere to strict membership criteria, including comprehensive training and quality assurance project visits.

Furthermore, once approved they must continue to regularly demonstrate quality workmanship in order to maintain their NSBC status.

The result is a meaningful membership scheme that provides unsurpassed technical excellence. We always recommend that an NSBC is involved in a project with a new-build or existing waterproofing requirement.

Meaningful, Insured Guarantees

Thanks to their ability to take responsibility for both the design and the installation of a complete waterproofing system, our specialist contractors will also support their projects by providing meaningful, insurance-backed installation guarantees for the work that they undertake.

The majority of our NSBCs also hold their own professional indemnity (PI) insurance, allowing you to delegate the full design liability for the waterproofing element of your project to the contractor.

Not only does this reduce your own level of liability, it also meets one of the key requirements of the British Standard for Waterproofing, BS 8102:2009, which is to employ the expertise of a qualified 'waterproofing specialist' as part of your project design team for the waterproofing aspect.



NEWTON SPECIFICATION PARTNERS

The Newton Specification Partnership (NSP) arose from our desire to improve the waterproofing design and specification process.

We formed a nationwide network of approved architects and specifiers who work directly with us to provide high-quality, waterproofing solutions for any below-ground structure.

Ongoing Training & Expertise

Newton Specification Partners (NSPs) will undertake the design of your waterproofing system as part of a holistic approach to designing your whole project.

To ensure they are always aware of the latest waterproofing developments every partner receives an annual RIBA-approved Newton CPD training seminar, as well as constant access to our team of industry-qualified technical experts.

Ready-Made Waterproofing Solutions

NSPs also benefit from access to our comprehensive library of ready-made waterproofing solutions for any below-ground scenario. As a result, your Specification Partner will always be able to ensure that you receive an appropriate waterproofing design that will achieve the required result for your project.

Specifiers and Contractors

With an expertly-designed waterproofing solution in place, our NSPs can also work directly with our Newton Specialist Basement Contractors (p56) to install the products and guarantee the installation.

As a result, your basement waterproofing requirements will be handled by the best companies in the industry from start to finish, including the design, the supply, the installation and the guarantee.



WANT NEWTON TO DESIGN YOUR WATERPROOFING?

Our team of industry-qualified experts have nearly 200 years of collective waterproofing experience, and with our design services they can act as an integral part of your project team.

For any project where you require our full design service and for us to act as the waterproofing design specialist, the good news is that our bespoke specifications (Level 4 and Level 5 in the table to the right) are backed by our own professional indemnity insurance, taking the liability away from you completely.

The table provides a basic overview of the levels of assistance that are available, however please note that this is not exhaustive and is only intended to provide an outline of the flexible solutions that our team offer.

Rest assured, our experts are always on hand to support your project, no matter the size or complexity.

LEVEL 1	LEVEL 2	LEVEL 3	LEVEL 4	LEVEL 5
<ul style="list-style-type: none"> Phone/email support 	<ul style="list-style-type: none"> Phone/email support Generic resources & technical guidance 	<ul style="list-style-type: none"> Phone/email support Generic resources & technical guidance Product advice Send drawings to Newton (no advice) QA site visits¹ 	<ul style="list-style-type: none"> Phone/email support Generic resources & technical guidance Product advice Send drawings to Newton for advice QA site visits¹ Designs reviewed 	<ul style="list-style-type: none"> Phone/email support Generic resources & technical guidance Product advice Send drawings to Newton for advice QA site visits¹ Designs reviewed Bespoke specification

¹ Site visits incur a charge per visit, and the frequency and purpose of site visits must be agreed by all parties prior to the commencement of the waterproofing.

PAGES

Acrylic Bonding Agent	7, 17
Acrylic Injection Resins	22, 50
Adhesive Mastic	25
Admixture	7, 17
Alarm	32-33
Anti-Mould/Condensation Paint	47
Automatic Macerator Lifting Station	37
Automatic Pumps	36-37
Back Box Liners	45
BaseBoard	28
BaseDrain	9, 28
Batteries	33
Battery Backup Systems	33-34
Battery Monitors	34
Bentonite	16
Bitumen	6, 11, 16, 41
BKK	47
BMV-712 Smart Battery Monitor	34
Bonding Agent	7, 17

PAGES

Cable Seals	23-24
Capping Strip	18
Cavity Drain Membranes	9, 27
CDM 503	27
CDM 503 Mesh	27
CDM 508	27
CDM 508 Eco Floor	27
CDM 508 Mesh	27
CDM 520 Eco Floor	27
CDM 906 Lime Inhibitor	29
CDM BaseBoard	28
CDM BaseDrain	28
CDM Condensation Strip	29
CDM Fibran XPS-500C	28
CDM FloorDrain	28
CDM Helical MultiPlua Tie	30

CDM Insulation Fixings	28
CDM MultiPlug	29
CDM NuSeal Plug	29
CDM OverTape	30
CDM Rope	29
CDM Sump & Pump System	9, 31
CDM System	9
CDM Joint Tape	30
Cementitious Membranes	7, 11
Cement-Coated Wall Sleeve	23
Cerbo GX	34
Clean Water Pumps	36-37
Cleaning Agents	22
Closed Cell Insulation	28
Cloud Connected Control Centre	34
Coatings	47, 48
Cob Plug	44
Concrete Repair	6, 15, 49-50
Condensation Paint	47
Condensation Strip	9, 29
Construction Joint Primer	15
Construction Joint Waterproofing	15
Control Panel-Pro	32
Control Panels	32-33
Control Systems	32-34
CP150	36
CP250	36
CP400	37
Curing Membrane	17, 47
Crystalline Coating	11
C.W.C. Stop Condense	47
DAB E.Box	33
DAB Genix	37
DampSafe 601 Slimline	46
DampSafe 603	46
DampSafe 603 Tile	46
DampSafe 802-DPM	47
DampSafe 809-HP DPC	47
DampSafe 901 Primer	48
DampSafe DPM	47
DampSafe System	46-47
Damp Proofing	42-47
Damp Proofing Membranes	43, 46
Damp Tolerable DPM	47
Damp Tolerable Primer	48
Deck Drainage Membrane	14

Decoupling Mat	46
Deliveries	4
Detail Strip	16
Dialer	33
Diasen BKK	47
Diasen C.W.C. Stop Condense	47
Diasen WATSTOP	12
DPC	47
DPM	40, 47, 48
Drainage Conduit	28
Drainage Systems	28
Drainage Membranes	14
Drill Pump	50
Dual Paddle Hand Mixer	18

PAGES

Ecoclean	22
Ecological Cleaning Agent	22
Electrical Pattress Box Liners	45
Epoxy Coating	12, 48
Epoxy Membrane	12, 48
External Drainage Membranes	14
External Waterproofing Membranes	11-13
Feka VS 1000	38
Fibran XPS-500C	9, 28
Fixing Plugs	28-29, 43-44
Flexible Mastic	25
FlexProof 106	15
FlexProof 106 Primer	15
FloorDrain	9, 28
Floor Membrane	27, 46
Flooring Membranes	46
Foul Water Pumping Systems	38-39

PAGES

Gas Barrier	13, 40-41
Gas Membranes	40-41
Geo Profile	18
Graduated Press Seal	24
Green Roof Drainage Membrane	14
Ground Gas Barrier Membrane	40
Ground Water Pumping Systems	39
Guarantees	4, 54-55
GX Touch	34
Hand-Held Mixers	18
Help & Advice	5
Hexafix Fast Coupling	19
High Water Level Alarm	33

HydroBond 108-LM	11
HydroBond 109-LM	12
HydroBond 2K-Flex	6, 11
HydroBond 2K-Flex Primer	16
HydroBond 314 Bentonite Granules	16
HydroBond 402 CCS-M	13
HydroBond 403 Plus	6, 13
HydroBond 403 Plus GB	13, 41
HydroBond 410 GeoDrain	14
HydroBond Fixing Set	18
HydroBond Geo Profile	18
HydroBond Plus Tape	17
HydroBond Protection Board	16
HydroBond-SA	13
HydroBond-SA Primer LT	16
HydroBond-SA Reinforcing Strip	16
HydroBond-SAGM	13
HydroBond-SAGM Detail Strip	16
HydroBond Soft Washer Fixings	18
HydroBond System	6
HydroBond Tape	17
HydroSeal 103 2K	11
HydroSeal 104 Super	11
HydroSeal 105 1K	11
HydroSeal 107 Elastic 2K	7, 11
HydroSeal 203-RM	6, 15, 50
HydroSeal 313-WP	50
HydroSeal 903 Primer	17
HydroSeal 905-CM	17
HydroSeal 908-LB	7, 17
HydroSeal 912-RT	17
HydroSeal 914-RT	17
HydroSeal System	7
HydroTank 301-EP	21
HydroTank 302 Injection Hose	8, 21
HydroTank 306 Swell Mastic	25
HydroTank 308 Stopaq	22
HydroTank 309 Waterbar Adhesive	25
HydroTank 315 Waterbar	21
HydroTank Ecoclean	22
HydroTank PU Cleaner	22
HydroTank System	8

PAGES

IBG	4, 54-55
Infinite Segments Press Seal	24
Injection Hose & Resins	21-22

Injection Packers	50	NewCoat 701-HB	48	Press Seals	24	Sewage Pump Control Panel	33
Injection Pump	50	NewCoat System	48	Pressure Rated Pipework	39	Sewage Pumping Systems	39
Injection Resins	21-22, 49-50	Newlath 805 Mesh	43	Primers	15-17, 48	Sewer Pipe Entry Seal	8, 23
Installation Guarantees	54	NewSeal 408 DeckDrain	14	Product Warranties	4, 54	Sheet Membranes	13
Insulation & Drainage	28	NewSeal 409 Root Barrier	14	Protech GM Super	40	Single-Paddle Hand Mixers	18
Insulation Boards	28	NewSeal 420 DeckDrain	14	Protech LAGM	41	Smartshunt 500A/50mV	34
Insulation Fixings	28	NewSeal PU	12	Protech VOC Flex	40	Soft Washer Fixings	18
Insurance	4, 54-55	NewSeal PU Fleece	15	Protection Board	16	Solvent Based Cleaning Agent	22
Insurance Backed Guarantees	4, 54-55	NewSeal PU Primer	15	PU Cleaner	22	Specialist Contractors	56
Inverters	33	Newton Specialist Basement Contractors	56	PU Fleece	15	Specification Partners	57
Joist Liner	30, 45	Newton Specification Partners	57	PU Injection Resins	21, 49-50	Structural Waterproofing	10-35
K - L	PAGES	Newtonite 801 Mastic	43	PU Primer	15	Sump Chambers	31, 38-39
KG-FIX Wall Collar	8, 23	Newtonite 803	43	PU Pump	50	Surface Water Pumping Systems	38-39
Latent Defects Insurance	4, 54-55	Newtonite 803 Mesh	43	Puddle Pumps	37	Swell Mastic	25
Leak Sealing Compound	51	Newtonite Cob Plug	44	Pulsa Nails & Washers	18	Swelling Waterbar	21
Leakinject 2K Flex 6811 LV	21	Newtonite Joist Liner	45	Pump Control & Backup Systems	32-34	Tanking	11-12
Leakinject 2K Flex 6812 LV	49	Newtonite Mesh Plug	44	Pump Control Panels	32-33	Tapes	17, 30, 44
Leakinject Hydrogel 6880	49	Newtonite Pipe Sleeve	45	Pump Controller	32	Tarmac Whitewall Plaster	45
Leakinject Pump	50	Newtonite Plaster Stop	44	Pumps	36-37	Telemetry & Backup	34
Leakinject Steel Packers	50	Newtonite Plug	44	Pumps & Pumping Systems	31, 36-39	Tie Bar Protection	24
Leakinject System	49-50	Newtonite System	42-45	Q - R	PAGES	Tie-Bolt Hole Sealing	24
Leakinject UNI 6816 E	49	Non-Meshed Membranes	27, 43	Quality Assurance	4	Tiling Membrane	46
Lifting Station	37	NP400	37	Recycling	4-5	Titan Sump Chamber	39
Lime Inhibitor	29	NP400 LLPS	37	Recycled Membranes	9, 27	Titan-Pro Sump Chamber	9, 31
Limited Repair Guarantees	54	NP400 PP	37	Reinforcement Tapes	17	Touch Screen Display	34
Liquid Applied Gas Membrane	41	NP750	37	Reinforcing Strip	16	Transport Carts	19
Liquid Primers	15-17, 48	NSBCs	56	Repair Mortar	6, 15, 50	Trojan-Pro Sump Chamber	38
Liquid Roofing Membrane	12	NSPs	57	Repair Products	49-50	Tundish Waste Pipe Entry	8, 22
Liquid Rubber	11-12	O - P	PAGES	RiveOut	24	Tunnelinject 2K 6822 LV	50
Liquid Waterproofing Membranes	11-12	OverTape	30	RivePipe	24	Type A	10-19
M - N	PAGES	Packers	50	RiveStop	8, 24	Type B	20-25
M14 to M14 Adaptor	19	Peel & Stick Membrane	13	RMX Mixing Stand	19	Type C	26-35
Macerator Lifting Station	37	Pipe Collar	30, 44	Roof Drainage Membrane	14	U - Z	PAGES
Manual Pumps	36-37	Pipe Sealant	22	Roofing Membrane	12, 14	Universal Wall Entry	23
Mastics	25, 43	Pipe Sleeve	30, 45	Root Barrier	14	Universal Wall Sleeve	23
Mesh Plugs	44	Pipework	39	Rubber Membrane	11-12	Victron Inverters	33
Mesh Tape	30, 44	Plaster	45	S - T	PAGES	VOC Barrier Membrane	40
Meshed Membranes	27, 43	Plaster Stop	44	Sealants	22, 25	Warranties	4, 54
Metal Waterbar	21	Plugs	28-29, 43-44	Sealing Rope	29	Wall Collar	8, 22
Mixer Adaptor	19	Polymer Waterbar	21	Sealing Tape	30	Wall Sleeves	23
Mixer Cleaning Bucket	19	Polyurethane Injection Resins	21, 49-50	Segmented Ring Press Seal	8, 24	Wall Ties	30, 45
Mixing Buckets	19	Polyurethane Injection Pump	50	Self-Adhesive Gas Membrane	13, 41	Warranties	4, 54
Mixing Paddles	18	Power Interruption System	33	Self-Adhesive Membrane	13	Waste Pipe Entry Seal	23
Mixing Stand	19	Pre-Applied Gas Barrier	13, 40-41	Self-Adhesive Pipe Seal	30, 44	Water Repellent	47
Mortar	6, 11, 15, 50	Pre-Applied Membrane	13, 40-41	Self-Healing Membrane	6, 13, 41	Waterbars & Waterstops	21
MultiPlug	29, 43	Preformed Pipe Sleeve	30, 45	Service Entry Sealing Systems	22-24	WATSTOP	12

.....

.....

.....

.....

.....

.....

.....

.....

.....

.....

.....

.....

.....

.....

.....

.....

.....

.....

.....

.....

.....

.....

.....

.....

.....

.....

.....

.....

.....

.....

.....

.....

.....

.....

.....

.....

.....

.....

.....

.....

.....

JN[®]

NEWTON

WATERPROOFING

Newton House
17-20 Sovereign Way
Tonbridge, Kent, TN9 1RH

T: +44 (0)1732 360 095

E: info@newtonwaterproofing.co.uk

W: www.newtonwaterproofing.co.uk

Designed. Supplied. Guaranteed.



Scan this QR code with your
smartphone camera to
download the free
Newton App.



Australia Office

Bayset Pty Ltd
48 Weaver St.
Coopers Plains, Queensland
Australia 4108

T: +61 (07) 3722 3822

E: info@bayset.com.au

W: www.bayset.com.au

New Zealand Office

Waterproofing Solutions Ltd
P.O. Box 12291
Penrose
Auckland 1642

T: +64 (09) 579 8966

E: dave@waterproofsolutions.co.nz

W: www.waterproofsolutions.co.nz

Qatar Office

CMT Industries, Manateq Logistics Park
Building #5, Street #3018, Zone 91
Birkat Al Awamer, P.O. Box 11353
Doha, Qatar

T: +974-30011190

E: newton@cmtqa.com

W: www.cmtqa.com